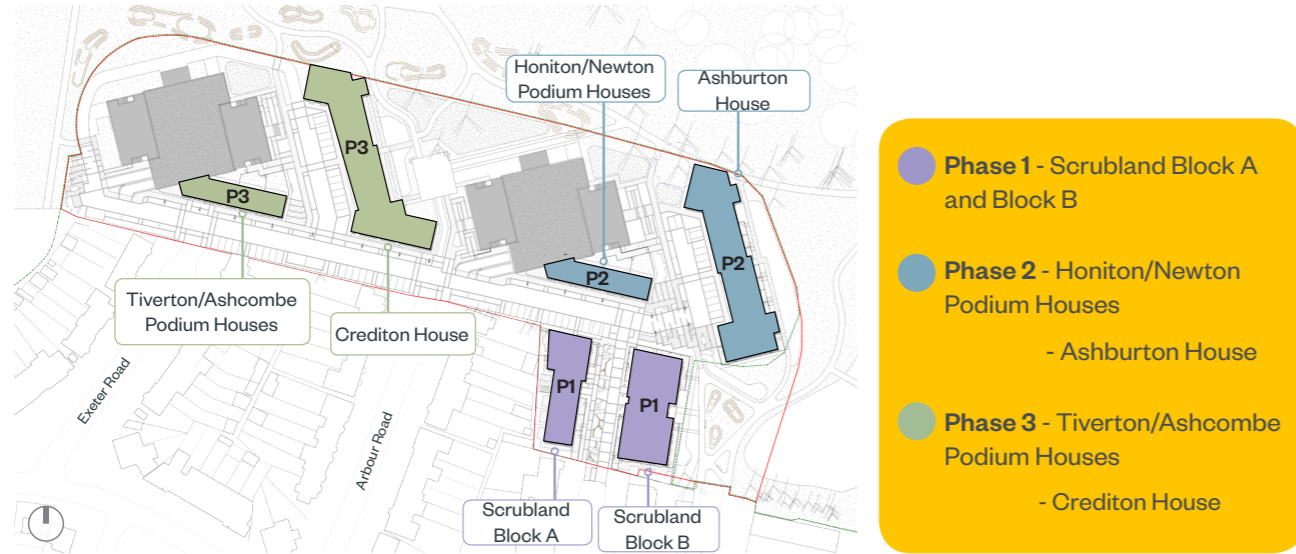


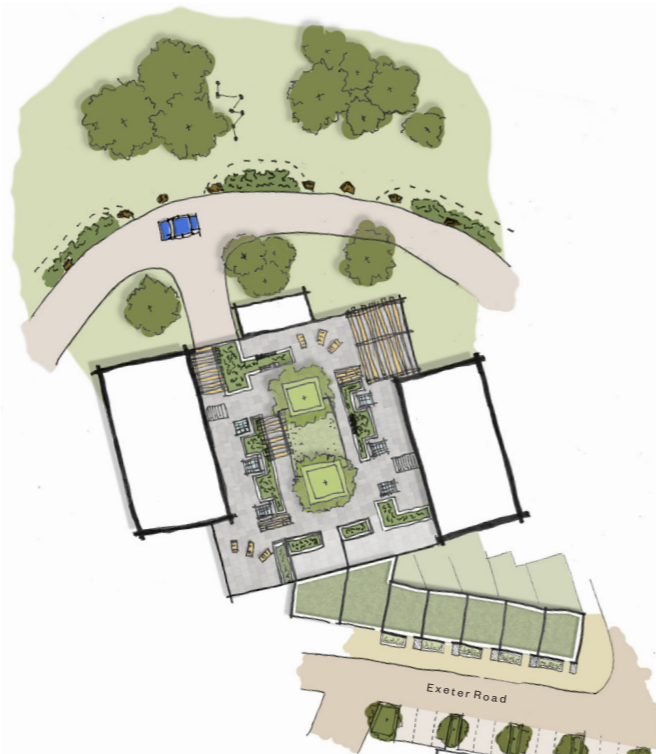
Opportunities

Development & Phasing

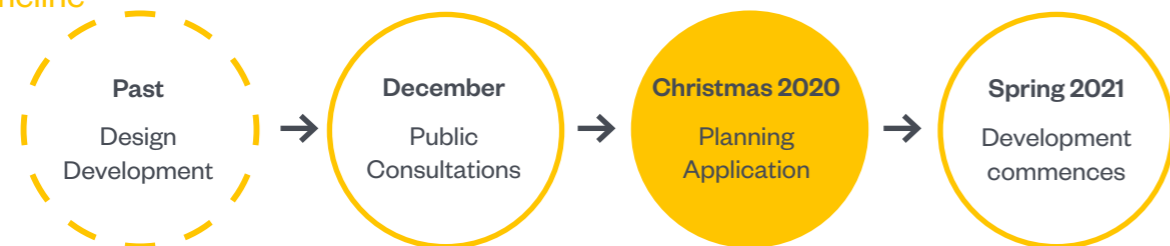


Landscaping to podiums

- Soften form of existing towers from park
- Reduce estate road width and introduce traffic calming measures to reduce speeds
- Informal boundary to park created with landscaping to prevent vehicle access
- Podium reinvigorated for residents to utilise existing available space
- Seating and play areas to facilitate positive interaction between residents



Timeline



Exeter Road Estate Redevelopment

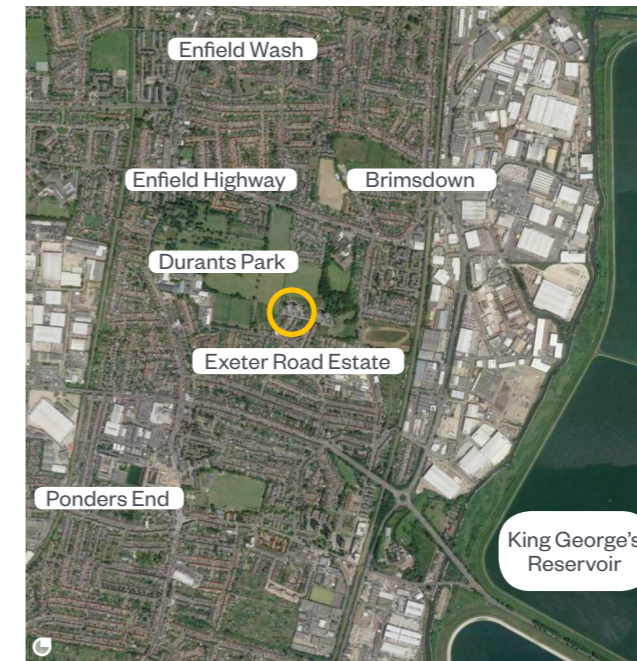
What's happening on the Exeter Road Estate?

The London Borough of Enfield are aiming to deliver a number of projects across the Borough. This programme aims to deliver innovative housing by unlocking potential within existing estates. It aims to create added value for existing residents with improvements to public areas and external landscaping. Enfield also aspires to create sustainable developments through energy efficient design.

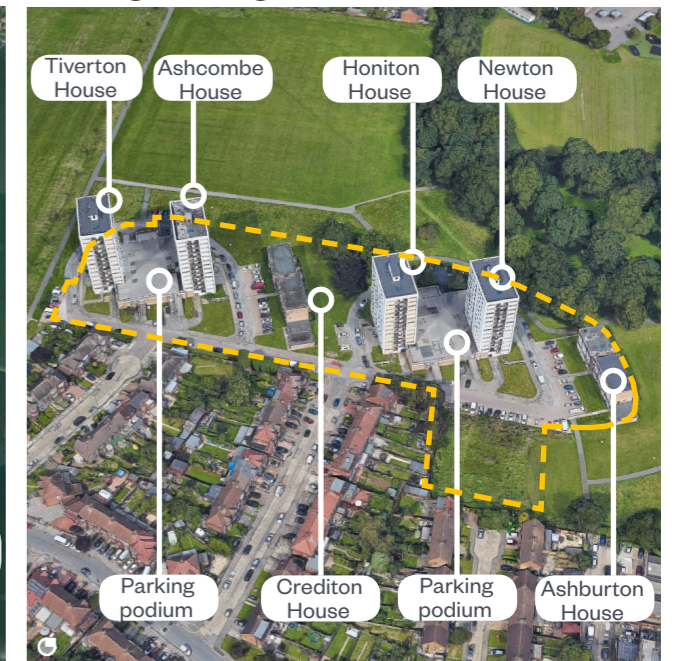
Why make changes to the Exeter Road Estate?

Exeter Road Estate recently underwent significant investment to the four high-rise blocks, including installation of an award-winning ground source heat pump to provide heating across the Estate. Our priorities are to create good homes in well-connected neighbourhoods and sustain strong and healthy communities. This next stage of renewal aims to continue the innovative, environmentally friendly, resident-first design approach of the recent works through the development of a new masterplan for the Estate.

Site Location



Existing Buildings



Constructed in the late 1960's, the Estate comprises four 14-storey tower blocks and two 4-storey blocks, all containing a mixture of one and two-bedroom flats. There are also two parking garages (currently disused), with additional parking areas and green space between and around the buildings.

Known issues on the Estate



Possible Improvements



The Masterplan

An extensively landscaped masterplan with a mixture of new-buildings and extensions to the Estate buildings to provide new homes.

With upgraded roads and parking provision, the masterplan also includes new play space, new public squares and a series of landscaped areas linking to the park. All designed to make the most of the Estate's parkland setting and create an active and vibrant community.

Proposals

- A** New housing on Exeter Road
- B** Extension to Crediton House
- C** New housing on Exeter Road
- D** Extension to Ashburton House
- E** New housing on Brookfields
- F** New housing on Brookfields
- 1** Improvements to Park edge
- 2** Landscaping and amenity space to podium roof
- 3** Re-surfaced to Road junctions
- 4** Re-surfaced parking areas
- 5** New play areas
- 6** Improvements to Park edge
- 7** New pedestrian and cycle link to Brookfields
- 8** New public square to Exeter Road
- 9** New pedestrian link to Alexandra Road
- 10** New play areas
- 11** New wetlands area



Exeter Road Estate Redevelopment

We would like your suggestions and feedback....

Your name

Your address

Your telephone number. So we can contact you.

Do you have an email? So we can contact you.

Do you have any questions or suggestions?

What do you think about our proposals for the estate?

Do you have any questions you would like to ask us?

Please post your suggestions and feedback by **13 December 2020** in the box located on the corner of Honiton & Newton House parking podium. Thank you!



Levitt Bernstein **People.Design**

Date of Issue: **November 2020**

For more information please visit our website:
<https://new.enfield.gov.uk/services/housing/housing-development-and-renewal/#16>

For further information contact:
Enfield Council Office Tel: **0208 078 9072**
Enfield Council Office Email: **Housing.Renewal@Enfield.gov.uk**
Levitt Bernstein Office Email: **hello@levittbernstein.co.uk**