



Early Learning Childcare Guide

Childcare... Help!

Childcare can be a confusing topic if you're a new parent or trying to figure out childcare all over again... This is where we can help.

Sometimes the type of childcare can be really confusing. What's the difference between registered unregistered and voluntary childcare? How do I know what to look for in Childcare? Well you can

find all this information and more below!

What is Registered Childcare and who are Ofsted?

All childcare providers that provide childcare for more than two hours, must be registered and regulated by Ofsted. Ofsted is the government body responsible for the registration and inspection of childcare providers. Ofsted's legal powers are set out

if@enfield.gov.uk

For more information, please visit
www.enfield.gov.uk/terrifictwos

in the Childcare Act 2006. A rigorous process for registration is important, because this gives the best protection for children and reassurance to parents.

Ofsted's aims in registering childcare providers are primarily to make sure that children are safe, well cared for and that they make good progress in their learning and development. The government set out a number of requirements that all those who offer services for children must meet. These are set out in the Early Years Foundation Stage for younger children up to the age of five, and the requirements of the Childcare

Register for children aged five and over.

Inspection is one way in which Ofsted contributes to improving the quality of care and early education, by judging the quality of what a childcare provider provides and how to improve it.

Regulation gives parents reassurance that they are placing their children with adults who are suitable to do the important job of caring for their children.

You can visit the Ofsted website: www.gov.uk/ofsted

What are the different childcare options?

Childminder	Individuals looking after children on domestic premises, which is not the home of any of the children being cared for.
Childcare on non-domestic premises (Day Nurseries, Pre Schools)	Childcare on premises that are not domestic premises
Home childcarer (Nanny)	Individuals caring for children of no more than two families at the home of one of the children.
Childcare on domestic premises	Four or more people looking after children on domestic premises, including childminders and their assistants.

What is the EYFS?

The Early Years Foundation Stage is a single framework that sets the standards for learning, development and care for children from birth to five. The document must be followed by all childcare providers registered by Ofsted on the Early Years register. The EYFS requires Ofsted registered settings to tailor their activities to children's individual needs, so that they become confident and happy in social situations, and be prepared

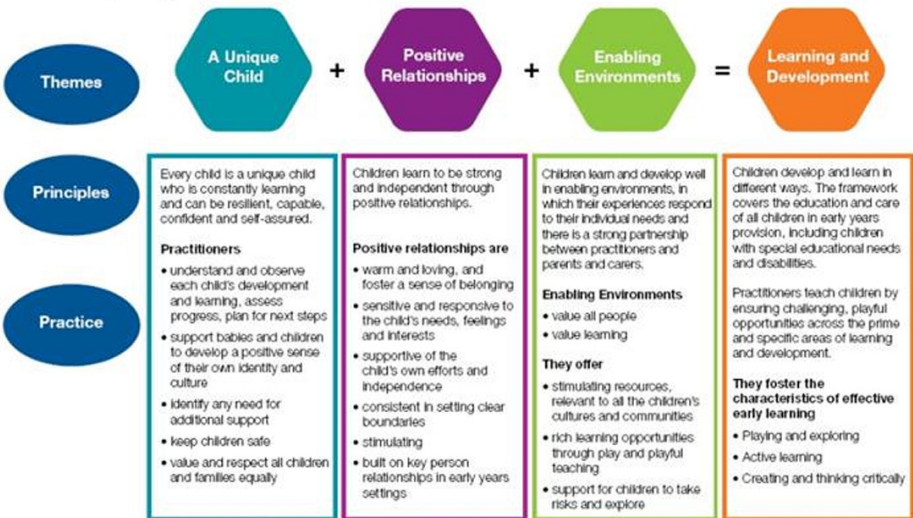
for school. All the while, they'll make sure that each child in their care is getting the support they need and above all is enjoying learning through play.

You can view the EYFS Parent guide in more detail here:

www.foundationyears.org.uk/files/2015/01/EYFS_Parents_Guide-amended1.pdf

Children are born ready, able and eager to learn. They actively reach out to interact with other people, and in the world around them. Development is not an automatic process, however. It depends on each unique child having opportunities to interact in positive relationships and enabling environments.

The four themes of the EYFS underpin all the guidance. This document - Development Matters - shows how these themes, and the principles that inform them, work together for children in the EYFS.



What does Quality Childcare mean?

Good quality childcare and early learning is vital to your child's development. Several pieces of nationally recognised research* have identified aspects of early years provision which have a positive impact on children's attainment, progress and development.

The key conclusions from this research are:

- The importance of the childcare setting being able to balance activities between ones that are led by adults, and those which your child chooses on their own
- The need for childcare staff to use 'sustained shared thinking' in the setting (see question 2 below).

By attending a setting in Enfield which regularly demonstrates this way of working, your child will be supported to develop skills in three prime areas: personal, social and emotional development; communication and language; and physical development, as well as other skills developed through cooperating and negotiating with children in the setting.



I want a Group Childcare Setting (Childcare on non-domestic premises)

This is called Group Childcare (Childcare on non-domestic premises.) Group childcare allows children opportunities to socialise with other children and to learn through play by providing various activities. This helps children to develop early language, mathematical and social skills. Group settings must also provide an area for children who wish to rest/sleep or play quietly.

Group Childcare is available from:

Pre Schools: Provide care for two or three hours in the morning or the afternoon during term time for children aged 2-5 years. Pre-school hours are not usually long enough to cater for the needs of working or studying parents.

Day Nurseries (including Children's Centre Nurseries): Provide full or part time education and care for children from 0-5 years. They provide an all year round service and are usually open for the length of the adult working day i.e 8.00am – 6.00pm.

Nursery Classes: These are attached to primary schools and provide education to children aged three or four depending on their date

of birth. Children usually attend part time, either in the morning or afternoon.

Costs

Pre-school and nursery costs can vary widely but expect to pay between £5.00 and £14.00 per session for a pre-school and between £100 and £230 per week for full time care in a day nursery.

You will be asked to sign a nursery/parent contract and be required to pay a deposit and or registration fee.

If you would like advice on how to pay for childcare fees, please visit www.enfield.gov.uk/if and click on **Free Early Education**.

Qualifications

Group settings are required to employ a person in charge (manager) who is qualified to level NVQ3 or equivalent in a childcare or early years subject and has at least two years' experience of managing a childcare setting.

At least half of the staff will need to be qualified to an appropriate Level 3 qualification. There must always be someone on the premises who is trained in Paediatric First Aid.

I want a Childminder...

Registered childminders are self-employed childcare professionals who look after one or more children under the age of 8, on domestic premises for more than a total of two hours a day for reward. Registered childminders are inspected by Ofsted to ensure they provide a safe and stimulating environment for the children they care for. As childminders care for smaller numbers of children in their home-setting they are more frequently able to take advantage of real-life spontaneous learning experiences like outings to the park and library.

Many childminders are able to offer the free early education sessions that all 3 and 4 year old children are entitled to. Childminders have the opportunity to care for children of different ages, which mean brothers and sisters can be cared for together.

Network Childminders

Enfield has established four "PACEY" Children Come First Quality Assured Childminding Networks, which have been created to support professional childminders in their work and to help them provide the highest possible care. Network Childminders work towards achieving "Quality Improvement Status" by agreeing to participate in an initial assessment, attend regular training sessions and

receive ongoing support/monitoring visits from their Support and Network Coordinator.

Costs

As childminders are self-employed there is no set national rate and they are able to set their own fees. A childminder will decide their hourly rate by taking into account various factors, which may include; the area in which they live, other settings in the area and the service they are going to offer. Some childminders may offer various reductions, for example if they are looking after two children within the same family.

Qualifications

Childminders are required to undertake and complete a 12 hour paediatric first aid qualification before registration. There is also a requirement for childminders to have completed training which helps them to understand and implement the Early Years Foundation Stage (EYFS) before they can register with Ofsted or a Childminder Agency

Some more questions you might have...

What if my child is disabled?

The Disability Discrimination Act applies to all early years providers. Settings have a responsibility not to treat a disabled child less favourable and to make reasonable adjustments for disabled children. You can search for childcare providers by the additional need or disability your child has on our online directory. This will show you providers that have experience or training in a particular area.

Enfield's Local Offer

This is a comprehensive guide to services for families with children and young people aged 0-25 years with special educational needs and/or disabilities.

What do Enfield Council do to help settings improve their practice?

Enfield Council has a Quality and Outcomes team (part of the Early Years Service) who work with childcare providers to support them to improve their settings and therefore improving the quality of childcare within Enfield, the team offers EYFS and preparing for Ofsted through support, guidance and training. If you'd like to read more about how we work with settings,

please have a look at our **Early Years Intervention and Support Strategy**.

What if I am unhappy with the childcare setting?

Discuss with your child's key person or childminder anything you are unhappy about as soon as the issue arises so that your concern can be resolved at an early stage. You can make a written complaint to the manager/childminder who must investigate and report back to you in 28 days. You can also contact Ofsted (contact details below) for further advice.

Any concerns that a child is at risk of neglect or abuse should be reported straight away to the Council's intake and assessment team: 020 8379 2507.

