

London Borough of Enfield  
**Meridian Water Strategic  
Infrastructure Works -  
Compulsory Purchase Order 2020**  
Proof of Evidence - Joe Nunan -  
Appendix A

Issue | 26 March 2021

This report takes into account the particular instructions and requirements of our client.

It is not intended for and should not be relied upon by any third party and no responsibility is undertaken to any third party.

Job number 256240-xx

**Ove Arup & Partners Ltd**  
13 Fitzroy Street  
London  
W1T 4BQ  
United Kingdom  
[www.arup.com](http://www.arup.com)

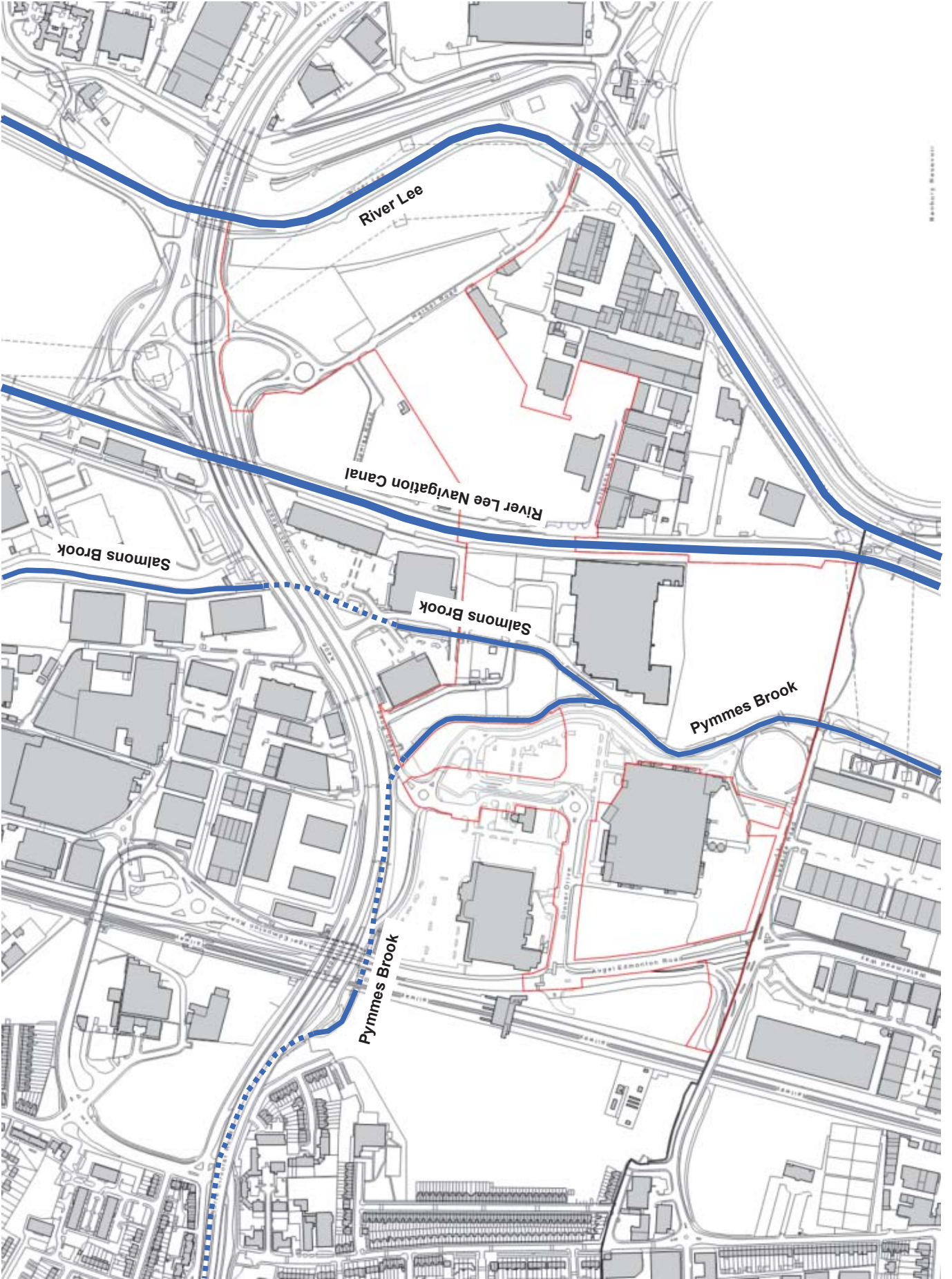
**ARUP**

## Appendix A

### Figures

## A1 List of Figures

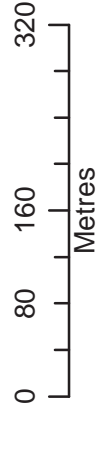
Figure Ref	Description
Figure 01	Watercourses at Meridian Water
Figure 02	Flood Mapping for Meridian Water (2012)
Figure 03	Update Flood Mapping (with 35% Climate Change allowance)
Figure 04	Possible Flood Compensation areas
Figure 05	Proposed Flood Compensation Basins and TWUL Assets
Figure 06	Proposed Flood Mitigation Measures
Figure 07	Salmons Brook flooding mitigation
Figure 09	Pymmes Brook Naturalisation Options (Feb 2019)
Figure 10	Proposed Surface Water drainage strategy
Figure 11	Earthworks - Excavation and placement of fill
Figure 13	Glover Drive - proposed works
Figure 15	Plot 136 overlaid on flood mapping
Figure 17	Edmonton Marshes Contours
Figure 19	Pillar of Support area
Figure 25	Depths of cut and fill in Edmonton Marshes



# Detailed FRA centred on The Meridian Water Site, Enfield - 24/12/2015 - HNL/049653/JH



Environment Agency  
 2 Bishops Square Business Park  
 St Albans Road West  
 Hatfield  
 Hertfordshire  
 AL10 9EX



## Legend

— Main Rivers

## Defended Flood Outlines

□ Site Boundary

■ 1 in 100+20% (\*CC) Defended

The data in this map has been extracted from the River Lee Modelling & Mapping Study (Halcrow, 2010). This model has been designed for catchment wide flood risk mapping. It should be noted that it was not created to produce flood levels for specific development sites within the catchment.

Modelled outlines take into account catchment wide defences.

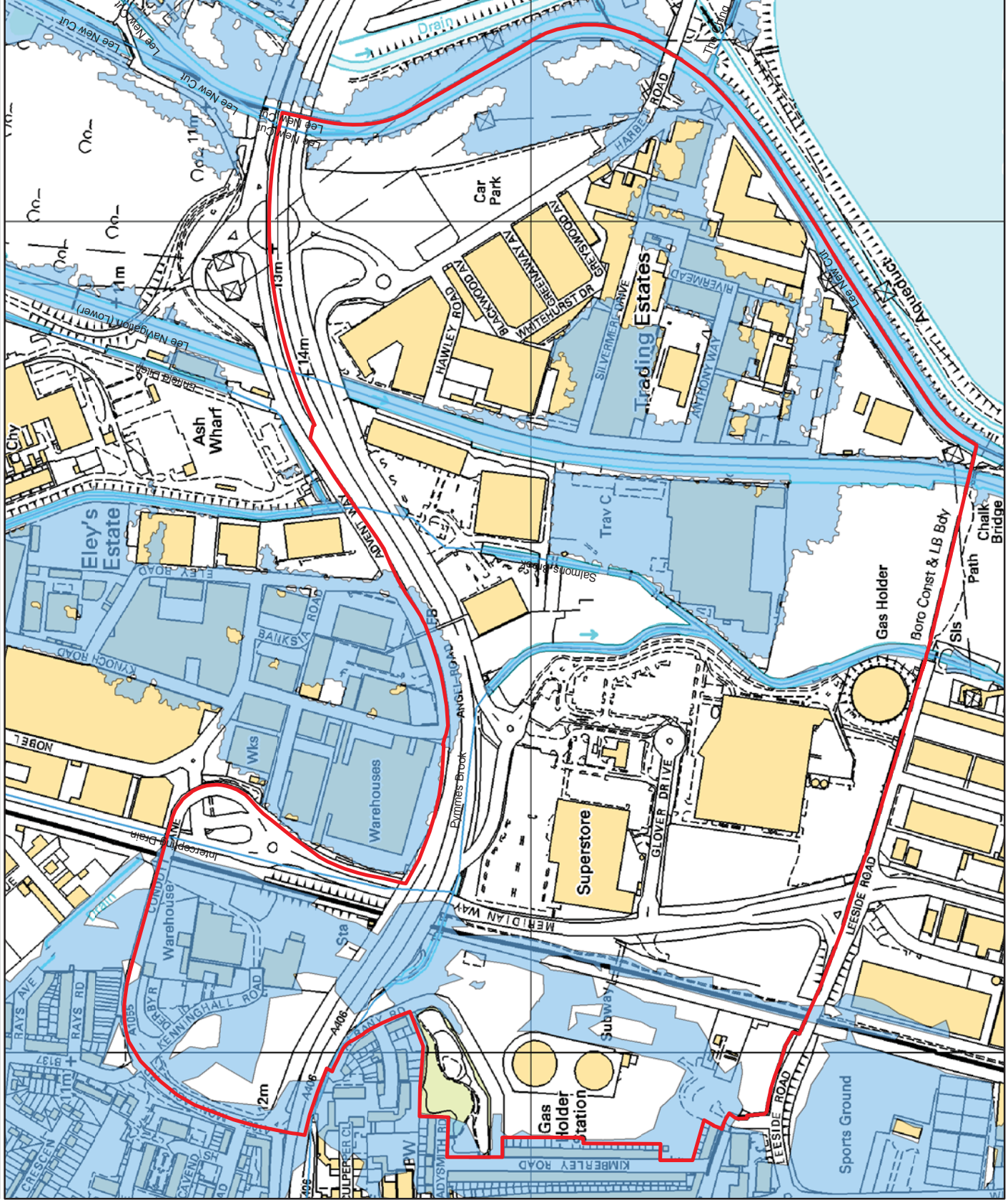
The data in this map has been extracted from the River Lee 2D Flood Mapping Study (CH2M Hill, 2014). This was a catchment-scale mapping study, so may need local updates for site-specific decisions. It should be noted that it was not created to produce flood levels for specific development sites within the catchment.

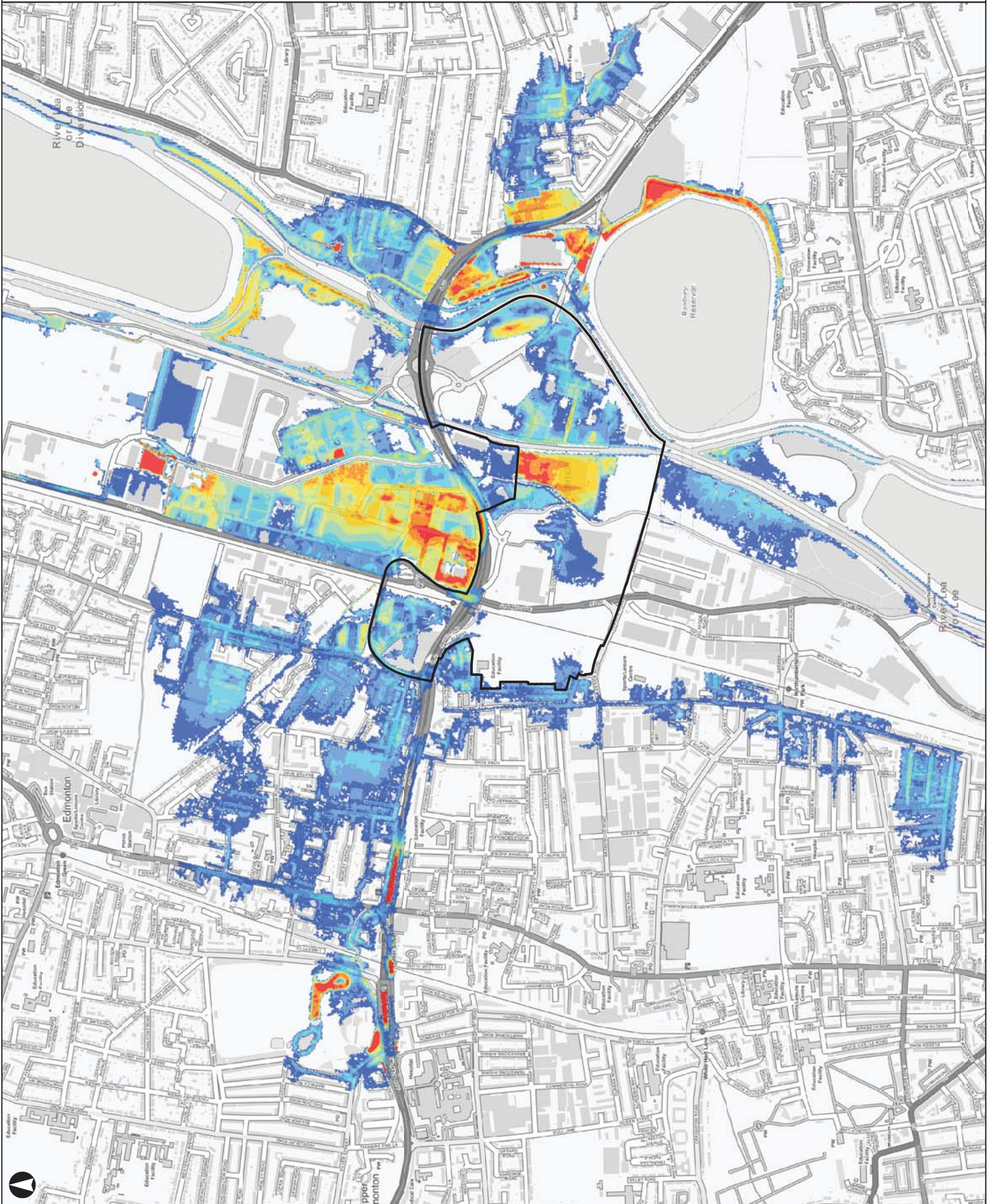
Modelled outlines take into account catchment-wide defences. Updates to model M03 were undertaken by the Lower Hall Suices Operational Scenario Modelling (CH2M Hill, 2014), and updates to model M04 by the Lower Lee Tributaries Economic Appraisal project (CH2M Hill, 2015).

Revised climate change allowances for peak river flow based on river basin districts are due to be published this January. These allowances will replace the current allowance for peak river flow which is 20%. The revised allowances are based on improved climate science and reflect the catchment characteristics within each river basin district. Hertfordshire and North London fall within the Thames river basin district. From the publication date we will be expecting applicants to factor the revised climate change allowances into their Flood Risk Assessments rather than the current 20% for peak river flow. If you have any further questions about this please contact us.

Produced by:

Partnerships & Strategic Overview,  
 Hertfordshire & North London

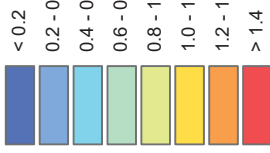




### Legend



### Flood Depth (m)



Contains OS data © Crown Copyright and database right 2018

Issue	Date	By	Chkd	Appd
P03	2019-05-14	TH	DvdL	JN



# ARUP

65 St Thomas Street  
Bristol BS1 6JZ  
+44 117 976 6432  
www.arup.com

Client

London Borough of Enfield

Job Title

Meridian Water Phase 2

Scale at A3

1:12,500

Job No  
**260637-00**

Drawing Status  
**Preliminary**

Drawing No

**MWP2-ARP-XX-XX-DR-CF-80105**

Issue

**P03**

