

CHANGES TO TRAFFIC RESTRICTIONS IN CECIL ROAD EN2 AND LITTLE PARK GARDENS EN2 AND CHANGES TO WAITING AND LOADING RESTRICTIONS AND PARKING PLACES IN BURLEIGH WAY EN2, CECIL ROAD EN2, CHURCH STREET EN2, LITTLE PARK GARDENS EN2 AND SARNESFIELD ROAD EN2

Further information may be obtained on the project page: <https://letstalk.enfield.gov.uk/EnfieldTown>

Alternatively, please email us on: journeysandplaces@enfield.gov.uk

1. NOTICE IS HEREBY GIVEN that the Council of the London Borough of Enfield on 19 June 2024 made The Enfield (Waiting and Loading Restriction) (Amendment No.251) Order 2024, The Enfield (Parking Places) (Pay and Display) (No. 3) Traffic Order 2024, The Enfield (Prescribed Routes) (No. 4) Traffic Order 2024, The Enfield (Free Parking Places) (Disabled Persons) (No. 1) 2024, The Enfield (Goods Vehicles Loading Bay) (No.1) Traffic Order 2024, The Enfield (Free Parking Places) (No.1) Traffic Order 2024 and The Enfield (Free Parking Places) (Solo Motorcycle) (Amendment No. 1) Order 2024, under sections 6, 45, 46, 49 and 124 of and Part IV of Schedule 9 to the Road Traffic Regulation Act 1984.

2. The general effect of the Orders will be to:

- (a) reverse the direction of the existing one-way operation in the southernmost east to west arm of Little Park Gardens so that vehicles are required to proceed from west to east;
- (b) remove the existing one-way working in the easternmost north to south arm of Little Park Gardens so vehicles will be able to proceed in both directions;
- (c) ban vehicles, except pedal cycles, from entering the easternmost north to south arm of Little Park Gardens between the northern kerb-line of Church Street and a point 18.7 metres north of that kerb-line;
- (d) shorten the bus stop on the north side of Church Street, opposite nos. 40 and 42 Church Street, by 1.3 metres at its western end;
- (e) remove the ban on vehicles entering the length of road located between the traffic islands in Cecil Road at its junction with Church Street and Little Park Gardens;
- (f) remove the existing pay to park parking places on both sides of the easternmost north to south arm of Little Park Gardens between Wilford Close and Church Street, and replace them with disabled persons' parking places (these parking places will be slightly longer so will also replace short lengths of waiting restrictions);
- (g) on the north side of Church Street, outside nos. 31 to 63 Church Street, remove all existing parking and loading places and replace them with:
 - (1) outside nos. 31 to 37, (i) a loading places for goods vehicles only, to operate from 8am to 6:30pm with a maximum stay period of 20 minutes; and (ii) a ban on waiting and waiting for the purposes of loading and unloading by vehicles at all other times; and
 - (2) outside nos. 37 and 39, a disabled persons' parking place.
- (h) on the south side of Church Street, remove the existing loading place for goods vehicles outside nos. 48 to 56, and provide:
 - (1) outside nos. 48 to 48B, two disabled persons' parking places;
 - (2) outside nos. 48B to 52, a parking place for solo motorcycles only; and
 - (3) outside nos. 54 to 62, (i) a loading places for goods vehicles only, to operate from 8am to 6:30pm with a maximum stay period of 20 minutes; and (ii) a short-stay (20 mins maximum) parking place, to operate at all other times.
- (i) provide three disabled persons' parking places in Sarnesfield Road on the west side, at the side of Enfield Town Library;
- (j) ban waiting by vehicles, including waiting for the purposes of loading and/or unloading, between 8am and 8pm (to be indicated by single yellow line and single kerb marks) in Sarnesfield Road, (i) on the west side, opposite 64a Church Street, 2 Sarnesfield Road and Palace Gardens Car Park; and (ii) on the east side, outside 64a Church Street and 2 Sarnesfield Road;
- (k) ban waiting by vehicles at any time and waiting for the purposes of loading and/or unloading between 7am and 10am and between 3pm and 7pm (to be indicated by double yellow lines and single kerb marks) in Cecil Road, on the west side, outside nos. 9 and 11 Cecil Road; and
- (l) ban waiting by vehicles, including waiting for the purposes of loading and/or unloading, at any time (to be indicated by double yellow lines and double kerb marks) in the locations referred to in the Schedule to this Notice. This will include removing any existing parking or loading places

in these lengths of road.

3. FURTHER NOTICE IS ALSO HEREBY GIVEN that the Council of the London Borough of Enfield will:

- (a) construct the type of flat-top road hump known as a “speed table” or “raised table”, with a maximum height of 50mm, at the junction of Church Street and Sarnesfield Road extending
 - (i) across the junction outside nos. 51 to 57 Church Street for a distance of 23 metres including the ramps; and
 - (ii) south into Sarnesfield Road for a distance of 10.2 metres including the ramps and
- (b) remove the existing Zebra pedestrian crossing in Cecil Road outside 29 Cecil Road and replace it with a Toucan crossing outside 27 Cecil Road and the entrance to Town Park. Associated zig-zag markings, on which vehicles will be prohibited from stopping at all times, will be placed on the carriageway either side of this crossing from the shared boundary of Nos. 29 and 31 Cecil Road heading north westwards for a total distance of 43 metres (measured around the outside of the carriageway).

4. Copies of the Orders, which will come into operation on 11 November 2024 and any other relevant documents can be inspected at the Town Library, 66 Church Street, Enfield EN2 6AX, Monday to Fridays 9am – 5pm inclusive, or online at: <https://new.enfield.gov.uk/services/roads-and-transport/traffic-management-orders/>

Copies of the notice, Orders and statement of reasons can also be obtained by emailing journeysandplaces@enfield.gov.uk or by writing to Traffic and Transportation, Civic Centre, Silver Street, Enfield, Middlesex, EN1 3XD (quoting reference TG52/1544).

5. Any person desiring to question the validity of the Orders or of provision contained therein on the grounds that it is not within the relevant powers of the Road Traffic Regulation Act 1984 or that any of the relevant requirements thereof or of any relevant regulation made thereunder has not been complied with in relation to the Orders may, within six weeks of the date on which the Order was made, make application for the purpose to the High Court.

Dated 19 June 2024

David B. Taylor
Head of Highways, Traffic and Parking

SCHEDULE (summary of ‘at any time’ waiting and loading restrictions)

Cecil Road,

- (a) the east side, opposite nos. 9 and 11;
- (b) both sides, between the boundary of nos. 11 and 13 and a point 7.3 metres east of the eastern kerb-line of Sarnesfield Road; *NOTE: the pedestrian crossing described in paragraph 3(b) above will also lie within this length of road.*

Church Street,

- (a) both sides, outside and opposite nos. 51 to 63b;
- (b) the north side, outside nos. 41 to 49;
- (c) the north side, opposite nos. 42 to 48;
- (d) the south side, outside nos. 40 to 48;

Little Park Gardens, the east and south sides, opposite the side of no. 31 Church Street and running around the southern extent of the main carriageway;

Sarnesfield Road,

- (a) the west side
 - (i) from the southern kerb-line of Church Street to a point 14.5 metres south of that kerb-line;
 - (ii) from the northern kerb-line of Cecil Road to a point 8 metres north of that kerb-line;
- (b) the east side,
 - (i) from the southern kerb-line of Church Street to a point 21.7 metres south of that kerb-line; and
 - (ii) from outside the vehicular access ways to Palace Gardens Service Areas and Car Park to its junction with Cecil Road.

The Enfield (Waiting and Loading Restriction) (Amendment No. 251) Traffic Order 2024

The Enfield (Parking Places) (Pay and Display) (No. 3) Traffic Order 2024

The Enfield (Prescribed Routes) (No. 4) Traffic Order 2024

The Enfield (Free Parking Places) (Disabled Persons) (No.1) 2024

The Enfield (Goods Vehicles Loading Bay) (No.1) Traffic Order 2024

The Enfield (Free Parking Places) (No.1) Traffic Order 2024

The Enfield (Free Parking Places) (Solo Motorcycle) (Amendment No. 1) Order 2024

STATEMENT OF REASONS

Enfield Town Liveable Neighbourhood – Phase 1

The Enfield Town Liveable Neighbourhood project proposes both improved walking and cycling provisions, as well as public transport passenger facilities. The aim of the project is to, reduce car use and promote sustainable transport options. The proposals also focus on improving the public realm, providing places to stop and rest, promoting a bustling and vibrant town centre.

This is an ambitious plan for our Town Centre and the Council, therefore, the Council will look to deliver the project in phases as funding becomes available. Below is a summary of the interventions proposed as part of Phase 1:

- Closure of the eastern end of Little Park Gardens at its junction with Church Street to create a new public square.
- Changes to how traffic will operate on Little Park Gardens to facilitate the road closure.
- New signalised crossings at the junction of Church Street / Sarnesfield Road.
- Changes to waiting and loading along Sarnesfield Road.
- Changes to waiting and loading on Church Street between Sarnesfield Road and Little Park Gardens.
- Relocation of the crossing point on Cecil Road, upgrading it to a signalised Toucan crossing.
- Implementation of diagonal path linking the two new crossing points on Church Street / Sarnesfield Road junction and on Cecil Road.
- Introduction of motorcycle parking on Burleigh Way.
- Changes to how traffic operates at the Church Street / Cecil Road / Little Park Gardens junction (straight ahead from Cecil Road will now be permitted for general traffic).
- Changes to waiting and loading within the Phase 1 project area.

More information about this project can be found on the project page:
<https://letstalk.enfield.gov.uk/EnfieldTown>



THE COUNCIL OF THE LONDON BOROUGH OF ENFIELD TRAFFIC MANAGEMENT ORDER

2024 No. 19

The Enfield (Waiting and Loading Restriction)
(Amendment No. 251) Order 2024

Made 19 June 2024

Coming into operation 11 November 2024

The Council of the London Borough of Enfield, after consulting the Commissioner of Police of the Metropolis, in exercise of the powers conferred by sections 6 and 124 of and Part IV of Schedule 9 to the Road Traffic Regulation Act 1984(a), and of all other powers thereunto enabling hereby make the following Order:-

1. This Order shall come into operation on 11 November 2024 and may be cited as the Enfield (Waiting and Loading Restriction) (Amendment No. 251) Order 2024.
2. In this Order the expression “enactment” means any enactment, whether public general or local, and includes any order, bye-law, rule, regulation, scheme or other instrument having effect by virtue of an enactment and any reference in this Order to any enactment shall be construed as a reference to that enactment as amended, applied, consolidated, re-enacted by or as having effect by virtue of any subsequent enactment.

3. Without prejudice to the validity of anything done or to any liability incurred in respect of any act or omission before the coming into operation of this Order, the Enfield (Waiting and Loading Restriction) Order 2012(b) shall have effect as though:-

(a) for the items numbered 44, 66, 554 and 227 in Schedule 1 to that Order there were substituted the items similarly numbered and set out in columns 1, 2 and 3 of Schedule 1 to this Order;

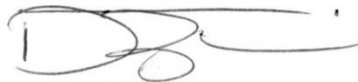
(a) 1984 c.27 (b) LBE 2012/1

(b) for the items numbered 18, 24 and 143 in Schedule 2 to that Order there were substituted the items similarly numbered and set out in columns 1, 2 and 3 of Schedule 2 to this Order;

(c) there were added to Schedule 2 to that Order the item numbered 177 and set out in columns 1, 2 and 3 of Schedule 3 to this Order; and

(d) there were added to Schedule 3 to that Order the items set out in columns 1, 2 and 3 of Schedule 4 to this Order

Dated this nineteenth day of June 2024.

A handwritten signature in black ink, consisting of a large, stylized 'D' followed by a series of loops and a horizontal stroke.

Head of Highways, Traffic and Parking
(The officer appointed for this purpose)

SCHEDULE 1

1	2	3
44.	<p>Cecil Road</p> <p>(a) the north, north-east and east side</p> <p>(i) between its junction with Church Street, Enfield and a point opposite a point 7.8 metres north of the common boundary of Nos. 9 and 11 Cecil Road;</p> <p>(ii) between a point opposite a point 7.8 metres north of the common boundary of Nos. 9 and 11 Cecil Road and a point 7.3 metres south-east of the eastern kerb-line of Sarnesfield Road</p> <p>(iii) between a point 7.3 metres east of the eastern kerb-line of Sarnesfield Road and a point 32 metres north-west of a point opposite the common boundary of Nos. 81 and 83 Cecil Road;</p> <p>(iv) between a point 32 metres north-west of a point opposite the common boundary of Nos. 81 and 83 Cecil Road and its junction with London Road;</p> <p>(b) the south, south-west and west side</p> <p>(i) between its junction with Church Street, Enfield and a point 7.8 metres north of the common boundary of Nos. 9 and 11 Cecil Road;</p> <p>(ii) between a point 7.8 metres north of the common boundary of Nos. 9 and 11 Cecil Road and a point 1.3 metres south-east of the common boundary between Nos. 37 and 39 Cecil Road;</p> <p>(iii) between a point 1.3 metres south-east of the common boundary between Nos. 37 and 39 Cecil Road and a point 5 metres south-east of the common boundary of No. 17 Sydney Road and No. 99 Cecil Road;</p> <p>(iv) between a point 5 metres south-east of the common boundary of No. 17 Sidney Road and No. 99 Cecil Road and its junction with London Road.</p>	<p>F</p> <p>A</p> <p>F</p> <p>A</p> <p>F</p> <p>A</p> <p>F</p> <p>A</p>
66.	<p>Church Street, Enfield</p> <p>(a) the north and north-east side</p> <p>(i) between its junction with Chase Side, Enfield and the south-eastern kerb-line of Little Park gardens at its westernmost junction with Church Street;</p>	<p>F</p>

	<ul style="list-style-type: none"> (ii) between the south-eastern kerb-line of Little Park Gardens at its Westernmost junction with Church Street and a point opposite the party wall of Nos. 39 and 41 Church Street; (iii) between a point opposite the party wall of Nos. 39 and 41 Church Street and a point 3.2 metres east of the common boundary between nos. 31 and 33 Church Street; (iv) between a point 3.2 metres east of the common boundary between nos. 31 and 33 Church Street and a point 2.3 metres east of a point opposite the common boundary of Nos. 42 and 44 Church Street; (v) between a point 2.3 metres east of a point opposite the common boundary of Nos. 42 and 44 Church Street and a point opposite the party wall of Nos. 17 and 19 Church Street; (vi) between a point opposite the party wall of Nos. 17 and 19 Church Street and its junction with the Town. 	<p>A</p> <p>@</p> <p>A</p> <p>F</p> <p>A</p>
	<ul style="list-style-type: none"> (b) the south and south-west side <ul style="list-style-type: none"> (i) between the eastern kerb-line of Old Park Avenue and the western kerb-line of Cecil Road; (ii) between the eastern kerb-line of Cecil Road and its junction with The Town.; 	<p>F</p> <p>A</p>
554.	<p>Little Park Gardens</p> <p>the eastern north to south arm</p> <ul style="list-style-type: none"> (a) the east side <ul style="list-style-type: none"> (i) between the southern extent of the main carriageway and a point 6.2 metres north of the northern kerb-line of Wilford Close; (ii) between a point 6.2 metres north of the northern kerb-line of Wilford Close and its junction with Chapel Street; (b) the west side <ul style="list-style-type: none"> (i) between the northern kerb-line of Church Street a point 13.5 metres south of the northern property boundary of No. 31 Church Street; (ii) between a point 13.5 metres south of the northern property boundary of No. 31 Church Street and its junction with Chapel Street. 	<p>A</p> <p>F</p> <p>A</p> <p>F</p>

227.	<p>Sarnesfield Road</p> <p>(a) the east side</p> <p>(i) between the southern kerb-line of Church Street, Enfield and a point 21.7 metres south of that kerb-line;</p> <p>(ii) between a point 21.7 metres south of that kerb-line and a point in line with the southern property boundary of No. 2 Sarnesfield Road;</p> <p>(iii) between a point in line with the southern property boundary of No. 2 Sarnesfield Road and the northern kerb-line of Cecil Road.</p> <p>(b) the west side</p> <p>(i) between the southern kerb-line of Church Street, Enfield and a point 14.5 metres south of that kerb-line;</p> <p>(ii) between a point 14.5 metres south of that kerb-line and a point 27.5 metres north of the northern kerb-line of Cecil Road;</p> <p>(iii) between the northern kerb-line of Cecil Road and a point 27.5 metres north of that kerb-line.</p>	<p>A</p> <p>AU</p> <p>A</p> <p>A</p> <p>AU</p> <p>A</p>
------	--	---

SCHEDULE 2

1	2	3
18.	<p>Cecil Road</p> <p>(a) the north, north-east and east side</p> <p>(i) between a point opposite a point 7.8 metres north of the common boundary of Nos. 9 and 11 Cecil Road and a point 7.3 metres south-east of the eastern kerb-line of Sarnesfield Road;</p> <p>(ii) between a point 32 metres north-west of a point opposite the common boundary of Nos. 81 and 83 Cecil Road and its junction with London Road;</p> <p>(b) the south, south-west and west side</p> <p>(i) between a point 7.8 metres north of the common boundary of Nos. 9 and 11 Cecil Road and a point 4.7 metres south of that boundary;</p> <p>(ii) between a point 4.7 metres south of the common boundary of Nos. 9 and 11 Cecil Road and a point 1.3 metres south-east of the common boundary between Nos. 37 and 39 Cecil Road;</p> <p>(iii) between a point 5 metres south-east of the common boundary of No. 17 Sidney Road and No. 99 Cecil Road and its junction with London Road.</p>	<p>1</p> <p>1</p> <p>£</p> <p>1</p> <p>1</p>
24.	<p>Church Street, Enfield</p> <p>(a) the north side</p> <p>(i) between a point opposite the western wall of No. 63b Church Street, Enfield and a point in line with the common boundary of Nos. 63 and 63b Church Street, Enfield;</p> <p>(ii) between the common boundary of Nos. 63 and 63b Church Street, Enfield and the common boundary of Nos. 39 and 41 Church Street, Enfield;</p> <p>(iii) between the common boundary of Nos. 39 and 41 Church Street, Enfield and a point 3.2 metres east of the common boundary between nos. 31 and 33 Church Street;</p> <p>(iv) between a point 3.2 metres east of the common boundary between nos. 31 and 33 Church Street and a point 2.3 metres east of a point opposite the common boundary of Nos. 42 and 44 Church Street;</p>	<p>11</p> <p>1</p> <p>\$</p> <p>1</p>

	<p>(v) between a point 2.3 metres east of a point opposite the common boundary of Nos. 42 and 44 Church Street and its junction with The Town.</p>	11
	<p>(b) the south side</p> <p>(i) between a point 24 metres west of the western kerb-line of Sarnesfield Road and a point 7.7 metres east of the eastern kerb-line of Sarnesfield Road;</p> <p>(ii) between a point 3.4 metres east of the party wall of Nos. 48 and 48a Church Street, Enfield and its junction with The Town.</p>	1 1
143.	Sarnesfield Road	
	<p>(a) the east side</p> <p>(i) between the southern kerb-line of Church Street, Enfield and a point 21.7 metres south of that kerb-line;</p> <p>(ii) between a point 21.7 metres south of that kerb-line and a point in line with the southern property boundary of No. 2 Sarnesfield Road;</p> <p>(iii) between a point in line with the southern property boundary of No. 2 Sarnesfield Road and the northern kerb-line of Cecil Road.</p>	1 47 1
	<p>(b) the west side</p> <p>(i) between the southern kerb-line of Church Street, Enfield and a point 14.5 metres south of that kerb-line;</p> <p>(ii) between a point 14.5 metres south of that kerb-line and a point 27.5 metres north of the northern kerb-line of Cecil Road;</p> <p>(iii) between the northern kerb-line of Cecil Road and a point 27.5 metres north of that kerb-line.</p>	1 47 1

SCHEDULE 3

1	2	3
177	Little Park Gardens the eastern north to south arm, the east side, from a point 2.3 metres north of the northern kerb-line of the vehicular access to no. 1 Little Park Gardens extending southwards and westwards around the southern extent of the main carriageway.	1

SCHEDULE 4

1 PRESCRIBED HOURS – SEE SCHEDULE 1	2 TIME	3 RESTRICTED HOURS – SEE SCHEDULE 2
BU	Between 7 a.m. and 10 a.m. and between 3 p.m. and 7 p.m. throughout the week.	73
BV	Between midnight and 8 a.m. and between 6.30 p.m. and midnight throughout the week	74

EXPLANATORY NOTE

This Order further amends the Enfield (Waiting and Loading Restriction) Order 2012, so as to introduce further “At any time” waiting and loading restrictions in Cecil Road, Church Street, Enfield, Little Park Gardens and Sarnesfield Road in the London Borough of Enfield.



THE COUNCIL OF THE LONDON BOROUGH OF ENFIELD TRAFFIC MANAGEMENT ORDER

2024 No. 20

The Enfield (Parking Places) (Pay and Display) (No. 3) Traffic Order 2024

Made 19 June 2024

Coming into operation 11 November 2024

The Council of the London Borough of Enfield, after consulting the Commissioner of Police of the Metropolis, in exercise of the powers conferred by sections 45, 46, 49 and 124 of and Part IV of Schedule 9 to the Road Traffic Regulation Act 1984(a), and of all other powers thereunto enabling hereby make the following Order:-

Citation and commencement

1. This Order shall come into operation on 11 November 2024 and may be cited as the Enfield (Parking Places) (Pay and Display) (No. 3) Traffic Order 2024.

Interpretation

3. In this Order:-

“enactment” means any enactment, whether public general or local, and includes any order, bye-law, rule, regulation, scheme or other instrument having effect by virtue of an enactment and any reference in this Order to any enactment shall be construed as a reference to that enactment as amended, applied, consolidated, re-enacted by or as having effect by virtue of any subsequent enactment; and

“the Order of 2007” means the Enfield (Parking Places) (Pay and Display) (Various Roads) (Special Parking Area) (No. 1) Order 2007(b).

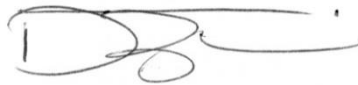
Unless the context otherwise requires, any other expression used in this Order which is also used in the Order of 2007 shall have the same meaning as in that Order.

(a) 1984 c.27 (b) LBE 2007/8

Revocation of designation of parking places

4. Without prejudice to the validity of anything done or to any liability incurred before the coming into operation of this Order, the designation of the parking places numbered 8, 13 and 14 in Part I of Schedule 4 to the Order of 2007 is hereby revoked.

Dated this nineteenth day of June 2024.

A handwritten signature in black ink, consisting of a large, stylized 'D' followed by a series of loops and a horizontal line extending to the right.

Head of Highways, Traffic and Parking
(The officer appointed for this purpose)

EXPLANATORY NOTE

This Order amends the Enfield (Parking Places) (Pay and Display) (Various Roads) (Special Parking Area) (No. 1) Order 2007, so as to remove 3 pay to park parking places.



THE COUNCIL OF THE LONDON BOROUGH OF ENFIELD TRAFFIC MANAGEMENT ORDER

2024 No. 21

The Enfield (Prescribed Routes) (No. 4) Order 2024

Made 19 June 2024

Coming into operation 11 November 2024

The Council of the London Borough of Enfield, after consulting the Commissioner of Police of the Metropolis, in exercise of the powers conferred by sections 6 and 124 of and Part IV of Schedule 9 to the Road Traffic Regulation Act 1984(a), and of all other powers thereunto enabling hereby make the following Order:-

1. This Order shall come into operation on 11 November 2024 and may be cited as the Enfield (Prescribed Routes) (No. 4) Order 2024.

4. In this Order:-

“enactment” means any enactment, whether public general or local, and includes any order, bye-law, rule, regulation, scheme or other instrument having effect by virtue of an enactment and any reference in this Order to any enactment shall be construed as a reference to that enactment as amended, applied, consolidated, re-enacted by or as having effect by virtue of any subsequent enactment; and

“pedal cycle” has the same meaning as in the Traffic Signs Regulations and General Directions 2016(b).

3. Without prejudice to the validity of anything done or to any liability incurred in respect of any act or omission before the coming into force of this Order, the Enfield (Restriction of Traffic) (No. 1) Traffic Order 1979(c) is hereby revoked.

(a) 1984 c.27; (b) S.I. 2016/362; (c) GLC 1979/198

4. No person shall cause or permit any vehicle to proceed in the length of Little Park Gardens (southernmost east to west arm) that lies between its junction with the easternmost north to south arm of Little Park Gardens and the westernmost north to south arm of Little Park Gardens, in a direction other than eastward.

5. No person shall cause or permit any vehicle to enter the length of Little Park Gardens (easternmost north to south arm) that lies between the northern kerb-line of Church Street, Enfield and a point 18.7 metres north of that kerb-line, unless that vehicle is a pedal cycle.

6. Nothing in this Order shall apply:-

(a) in relation to anything done with the permission or at the direction of a police constable in uniform or a traffic warden; or

(b) to any person who causes any vehicle to proceed in accordance with any restriction or requirement indicated by traffic signs placed pursuant to section 66 or 67 of the Road Traffic Regulation Act 1984.

Dated this nineteenth day of June 2024.

A handwritten signature in black ink, appearing to be 'D. G. ...', written over a horizontal line.

Head of Highways, Traffic and Parking
(The officer appointed for this purpose)



THE COUNCIL OF THE LONDON BOROUGH OF ENFIELD TRAFFIC MANAGEMENT ORDER

2024 No. 22

The Enfield (Free Parking Places) (Disabled Persons) (No. 3) Order 2024

Made 19 June 2024

Coming into operation 11 November 2024

The Council of the London Borough of Enfield, after consulting the Commissioner of Police of the Metropolis, in exercise of the powers conferred by sections 6 and 124 of and Part IV of Schedule 9 to the Road Traffic Regulation Act 1984(a), and of all other powers thereunto enabling hereby make the following Order:-

Citation and commencement

1. This Order shall come into operation on 11 November 2024 and may be cited as the Enfield (Free Parking Places) (Disabled Persons) (No. 1) Order 2024

Interpretation

2. (1) In this Order “the Order of 2017” means the Enfield (Free Parking Places) (Disabled Persons) (No. 1) Order 2017(b).

(2) Any reference in this Order to any enactment shall be construed as a reference to that enactment as amended, applied, consolidated, re-enacted by or as having effect by virtue of any subsequent enactment.

(3) Unless the context otherwise requires, any expression used in this Order which is also used in the Order of 2017 shall have the same meaning as in that Order.

(a) 1984 c.27 (b) LBE 2017/17

Designation of parking places and application of the Order of 2017 thereto

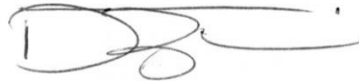
6. (1) Each area on a street comprising the length of carriageway of a street specified in column 2 of the Schedule to this Order and bounded on one side of that length by the edge of the carriageway and having a width throughout of 2.5 metres in Church Street, 2 metres in Little Park Gardens and 2.4 metres in Sarnesfield Road, is designated as a parking place.

(2) The provisions of the Order of 2017 (other than Articles 3, 12 and 13) shall apply to the area designated as a parking place by this Order as if in those provisions any reference to a parking place included a reference to an area designated as a parking place by this Order and as if any reference to Schedule 1 to the Order of 2017 included a reference to the Schedule to this Order.

Placing of traffic signs etc

7. The Council shall place and maintain traffic signs indicating the limits of each parking place designated by this Order and that such parking place may only be used by vehicles specified in Article 4 of the Order of 2017.

Dated this nineteenth day of June 2024.

A handwritten signature in black ink, consisting of several loops and a long horizontal stroke at the end.

Head of Highways, Traffic and Parking
(The officer appointed for this purpose)

SCHEDULE (see article 3)

IN RELATION TO A PARKING PLACE REFERRED TO IN THIS SCHEDULE THE EXPRESSION "PERMITTED HOURS" MEANS AT ANY TIME. AREAS ON STREETS DESIGNATED AS PARKING PLACES IN WHICH A DISABLED PERSON'S VEHICLE DISPLAYING A VALID DISABLED PERSON'S BADGE MAY BE LEFT, SUBJECT TO COLUMNS 3 AND 4 BELOW, DURING THE PERMITTED HOURS.

1 No. of loading bay	2 Designated parking place	3 Maximum period for which a vehicle may remain in a parking place at any one time	4 Period within which a vehicle may not return to a parking place	5 Special manner of standing
1154.	CHURCH STREET, ENFIELD, the north side, from a point in line with the common boundary between nos. 39 and 41 Church Street to a point 2.1 metres west of the common boundary between nos. 35 and 37 Church Street.	-	-	-
1155.	CHURCH STREET, ENFIELD, the south side, from a point 2.4 metres west of the common boundary between nos. 46 and 48 Church Street westwards for a distance of 13.2 metres.	-	-	-
1156.	LITTLE PARK GARDENS, the eastern north to south arm, the west side, from a point 1.5 metres south of the northern property boundary of No. 31 Church Street to a point 13.5 metres south of that boundary.	-	-	-

1157.	LITTLE PARK GARDENS, the eastern north to south arm, the east side, from a point 1.5 metres south of the southern kerb-line of Wilford Close to a point 15.5 metres south of that kerb-line.	-	-	-
1158.	SARNESFIELD ROAD, the west side, from a point 7.7 metres north of the northern kerb-line of Cecil Road to a point 27.5 metres north of that kerb-line.	-	-	-

EXPLANATORY NOTE

(This Note is not part of the Order but is intended to indicate its general purport).

This Order designates disabled persons' parking places in the London Borough of Enfield.



THE COUNCIL OF THE LONDON BOROUGH OF ENFIELD TRAFFIC MANAGEMENT ORDER

2024 No. 23

The Enfield (Goods Vehicle Loading Bay) (No. 1) Traffic Order 2024

Made 19 June 2024

Coming into operation 11 November 2024

The Council of the London Borough of Enfield, after consulting the Commissioner of Police of the Metropolis, in exercise of the powers conferred by sections 6 and 124 of and Part IV of Schedule 9 to the Road Traffic Regulation Act 1984(a), and of all other powers thereunto enabling hereby make the following Order:-

1. This Order shall come into operation on 11 November 2024 and may be cited as the Enfield (Goods Vehicle Loading Bay) (No. 1) Traffic Order 2024.

Interpretation

5. In this Order:-

“enactment” means any enactment, whether public general or local, and includes any order, bye-law, rule, regulation, scheme or other instrument having effect by virtue of an enactment and any reference in this Order to any enactment shall be construed as a reference to that enactment as amended, applied, consolidated, re-enacted by or as having effect by virtue of any subsequent enactment; and

“the Order of 2018” means The Enfield (Goods Vehicle Loading Bay) (No. 3) Traffic Order 2018(b).

Designation & revocation of loading places and application of the Order of 2018 thereto

8. (1) Each area of a street comprising the length of carriageway of a street specified in column 2 of the Schedule to this Order and bounded on one side of

that length by the edge of the carriageway and having a width throughout of 2.5 metres is designated as a loading place.

(a) 1984 c.27 (b) LBE 2018/26

(2) The Order of 2018 shall have effect as though:-

- (i) items 2 and 3 in Schedule 1 to that Order and item 1 in Schedule 10 to that Order were omitted; and
- (ii) the Schedule to this Order were added to that Order as Schedule *.

(3) The provisions of the Order of 2018 (other than Articles 3, 5(a), 13 and 14) shall apply to the area designated as a loading place by this Order as if in those provisions any reference to a loading place included a reference to an area designated as a loading place by this Order and as if any reference to Schedule 1 to the Order of 2018 included a reference to the Schedule to this Order.

Restrictions on the use of a loading bay

9. During the permitted hours, the driver or other person in charge of a vehicle which is permitted to use a loading bay shall not cause such vehicle to wait thereon during the hours specified: -

- (a) for a period of more than 20 minutes, or such longer period as a police constable in uniform or a civil enforcement officer may approve in a loading bay specified in the Schedule to this Order; and
- (b) other than whilst goods are being continuously loaded or unloaded from the vehicle or are being delivered or collected from premises adjacent to the vehicle during the specified or approved period.

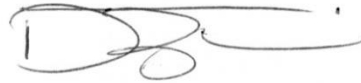
Placing of traffic signs etc

10. The Council shall:

- (a) place and maintain traffic signs indicating the limits of the loading bay designated by this Order;
- (b) place and maintain in or in the vicinity of the loading bay designated by this Order traffic signs indicating that such loading bay may be used during the permitted hours for the leaving only of the vehicles specified in Article 4 of the Order of 2018;

(c) carry out such work as is reasonably required by the Order of 2018 or by this Order for the purposes of the satisfactory operation of the loading bay designated by this Order.

Dated this nineteenth day of June 2024.



Head of Highways, Traffic and Parking
(The officer appointed for this purpose)

**SCHEDULE (see article 3)
[SCHEDULE * to the Order of 2018]**

In relation to a loading bay referred to in this Schedule, the permitted hours during which goods vehicles may be left for a maximum period of 20 minutes are between 8.00 a.m. and 6.30 p.m. on Mondays to Sundays inclusive provided that continuous loading or unloading is taking place.

1 No. of loading bay	2 Designated loading bay	3 Special manner of standing
1.	CHURCH STREET, ENFIELD, the north side, from a point 2.1 metres west of the common boundary between nos. 35 and 37 Church Street to a point 3.2 metres east of the common boundary between nos. 31 and 33 Church Street.	-
2.	CHURCH STREET, ENFIELD, the south side, from a point 0.7 metres west of the common boundary between nos. 62 and 64 Church Street to a point 0.7 metres east of the common boundary of nos. 52 and 54 Church Street.	-

EXPLANATORY NOTE

(This Note is not part of the Order but is intended to indicate its general purport).

This Order designates goods vehicles loading bays in the London Borough of Enfield.



THE COUNCIL OF THE LONDON BOROUGH OF ENFIELD TRAFFIC MANAGEMENT ORDER

2024 No. 24

The Enfield (Free Parking Places) (No.1) Traffic Order 2024

Made 19 June 2024

Coming into operation 11 November 2024

The Council of the London Borough of Enfield, after consulting the Commissioner of Police of the Metropolis, in exercise of the powers conferred by sections 6 and 124 of the Road Traffic Regulation Act 1984(a), as amended, and of all other powers thereunto enabling, hereby make the following Order:

Citation and commencement

1. This Order may be cited as the Enfield (Free Parking Places) (No. 1) Traffic Order 2024 and shall come into operation on 11 November 2024.

Interpretation

2. (1) In this Order, "the Order of 1998" means the Enfield (Short Term Parking Places) (Various Roads, Enfield Town) (Special Parking Area) (No. 1) Traffic Order 1998.

- (2) Any reference in this Order to any enactment shall be construed as a reference to that enactment as amended, applied, consolidated, re-enacted by or as having effect by virtue of any subsequent enactment.

(a) 1984 c.27 (b) LBE 1998/14

(3) Unless the context requires otherwise, any expression used in this Order which is also used in the Order of 1998 shall have the same meaning as in that Order.

Designation of parking places and application of the Order of 1998 thereto

4. (1) Each area on a highway comprising the length of carriageway of a street specified in column 2 of the Schedule to this Order and bounded on one side of that length by the edge of the carriageway and having a width throughout of 2.5 metres is designated as a parking place.

(2) The provisions of the Order of 1998 (other than Articles 3) shall apply to the areas designated as parking places by this Traffic Order as if in those provisions any reference to a parking place included a reference to an area designated as a parking place by this Order and as if any reference to the Schedules to the Order of 1998 included a reference to the Schedule to this Order.

Amendments to the Order of 1998

5. The Order of 1998 shall have effect as though:-

(1) for Article 5 in that Order there were substituted the following as a new Article 5:-

“5. No person shall cause any vehicle to be left in a parking place during the permitted hours for a continuous period of more than:-

- (a) one hour in any parking place specified in Schedule 1 to this Order;
- (b) two hours in any parking place specified in Schedule 2 to this Order;
- (c) 20 minutes in any parking place specified in Schedule 3 to this Order;

Provided that nothing in this Article shall apply to a disabled person's vehicle which displays in the relevant position a disabled person's badge issued by any local authority.”; and

(2) the Schedule to this Order were added to that Order after Schedule 2 as Schedule 3.

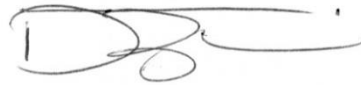
Placing of traffic signs, etc.

6. The Council shall:

- (a) place and maintain traffic signs indicating the limits of each parking place designated by this Traffic Order;

- (b) place and maintain in or in the vicinity of each parking place designated by this Order traffic signs indicating that such parking place may be used during the permitted hours for the leaving only of the vehicles specified in Article 4 of the Traffic Order of 1998;
- (c) carry out such other work as is reasonably required by the Order of 1998 or by this Traffic Order for the purposes of the satisfactory operation of a parking place designated by this Order.

Dated this nineteenth day of June 2024

A handwritten signature in black ink, consisting of a large, stylized initial 'D' followed by a series of loops and a horizontal line extending to the right.

Head of Highways, Traffic and Parking
(The officer appointed for this purpose)

SCHEDULE (see Article 4)**SCHEDULE 3**

IN RELATION TO A PARKING PLACE REFERRED TO IN THIS SCHEDULE THE EXPRESSION "PERMITTED HOURS" MEANS BETWEEN MIDNIGHT AND 8 A.M AND BETWEEN 6.30 P.M ON ANY DAY NOT BEING CHRISTMAS DAY, GOOD FRIDAY OR A BANK HOLIDAY

AREAS ON A STREET DESIGNATED AS PARKING PLACES

1 No. of parking place	2 Designated parking place	3 Special manner of standing	4 Permitted hours
27.	CHURCH STREET, ENFIELD, the south side, from a point 0.7 metres west of the common boundary between nos. 62 and 64 Church Street to a point 0.7 metres east of the common boundary of nos. 52 and 54 Church Street	-	Monday to Sunday Midnight to 8 am and 6.30 pm to Midnight Max Stay 20 minutes

EXPLANATORY NOTE

(This Note is not part of the Order but is intended to indicate its general purport).

The Enfield (Free Parking Places) (Special Parking Area) (No. 1) Order 1998, as amended, designates parking places on certain streets in the London Borough of Enfield in which vehicles authorised by those Orders may wait without payment during the permitted hours.

This Order designates free parking places in Church Street in the London Borough of Enfield.



THE COUNCIL OF THE LONDON BOROUGH OF ENFIELD TRAFFIC MANAGEMENT ORDER

2024 No. 25

The Enfield (Free Parking Places) (Solo Motorcycle) (Amendment No. 1) Order 2024

Made 19 June 2024

Coming into operation 11 November 2024

The Council of the London Borough of Enfield, after consulting the Commissioner of Police of the Metropolis, in exercise of the powers conferred by sections 6 and 124 of and Part IV of Schedule 9 to the Road Traffic Regulation Act 1984(a), and of all other powers thereunto enabling hereby make the following Order:-

Citation and Commencement

1. This Order shall come into operation on 11 November 2024 and may be cited as the Enfield (Free Parking Places) (Solo Motorcycle) (Amendment No. 1) Order 2024.

Interpretation

6. In this Order, the expression “enactment” means any enactment, whether public general or local, and includes any order, bye-law, rule, regulation, scheme or other instrument having effect by virtue of an enactment and any reference in this Order to any enactment shall be construed as a reference to that enactment as amended, applied, consolidated, re-enacted by or as having effect by virtue of any subsequent enactment and “the Order of 2005” means the Enfield (Free Parking Places) (Solo Motor-cycle) (Special Parking Area) (No. 1) Order 2005(b).

Designation of solo motor-cycle parking place and application of the Order of 2005 thereto

7. (1) Each area on a highway comprising a length of carriageway of a street specified in column 2 of the Schedule to this Order and bounded on one side of

(a) 1984 c.27 (b) LBE 2005/37

that length by the edge of the carriageway and having a width throughout of 2.5 metres in Church Street is designated as a solo motor-cycle parking place.

(2) The provisions of the Order of 2005 (other than Articles 3 and 11) shall apply to the area designated as a solo motor-cycle parking place by this Order as if in those provisions any reference to a solo motor-cycle parking place included a reference to an area designated as a solo motor-cycle parking place by this Order and as if any reference to the Schedule to the Order of 2005 included a reference to the Schedule to this Order.

Placing of traffic signs etc

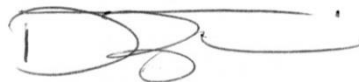
8. The council shall:

(a) place and maintain traffic signs indicating the limits of the solo motor-cycle parking place designated by this order;

(b) place and maintain in or in the vicinity of that solo motor-cycle parking place traffic signs indicating that such solo motor-cycle parking place may be used during the permitted hours for the leaving only of the vehicles specified in Article 4 of the Order of 2005;

(c) carry out such work as is reasonably required by the Order of 2005 or by this Order for the purposes of the satisfactory operation of the solo motor-cycle parking place designated by this Order.

Dated this nineteenth day of June 2024.

A handwritten signature in black ink, appearing to be 'D. G. ...', written over a faint horizontal line.

Head of Highways, Traffic and Parking
(The officer appointed for this purpose)

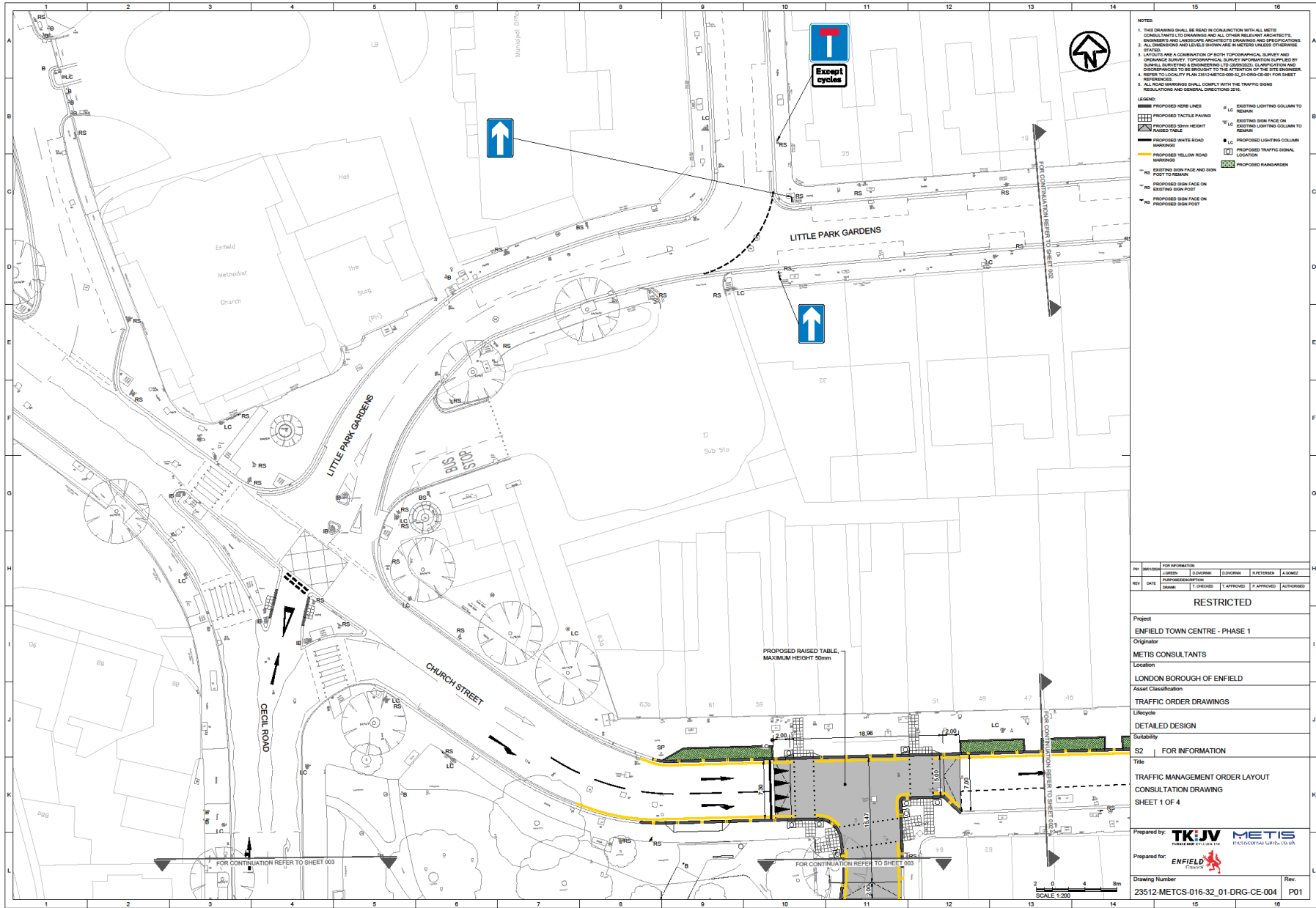
SCHEDULE
(see Article 4)

1 No of parking place	2 Designated parking place	3 Special manner of standing
3.	CHURCH STREET, ENFIELD, the south side, from a point 0.8 metres east of the common boundary of Nos. 52 and 54 Church Street, Enfield eastward for a distance of 12.0 metres.	At 90 degrees to the kerb- line

EXPLANATORY NOTE

(This Note is not part of the Order, but it is intended to indicate its general purport)

This Order designates solo motor-cycle parking places in Church Street, Enfield within the London Borough of Enfield.



- NOTES**
1. THIS DRAWING SHALL BE READ IN CONJUNCTION WITH ALL METIS CONSULTANTS TO DRAWING AND ALL OTHER RELEVANT ARCHITECTS, ENGINEERS AND LANDSCAPE ARCHITECTS DRAWINGS AND SPECIFICATIONS.
 2. ALL DIMENSIONS AND LEVELS SHOWN ARE IN METRES UNLESS OTHERWISE STATED.
 3. LAYOUTS ARE A COMBINATION OF BOTH TOPOGRAPHICAL SURVEY AND DISTANCE SURVEY. TOPOGRAPHICAL SURVEY INFORMATION SUPPLIED BY SUNELL SURVEYING & ENGINEERING LTD (23512) CLASSIFICATION AND DISCREPANCIES TO BE BROUGHT TO THE ATTENTION OF THE SITE ENGINEER.
 4. REFER TO LOCALS SHALL COMPLY WITH THE TRAFFIC SIGN REGULATIONS AND GENERAL DIRECTIONS 2016.
 5. ALL ROAD MARKINGS SHALL COMPLY WITH THE TRAFFIC SIGN REGULATIONS AND GENERAL DIRECTIONS 2016.

- LEGEND**
- PROPOSED KERF LINES
 - PROPOSED TACTILE PAVING
 - PROPOSED SIGN HEIGHT
 - PROPOSED WHITE ROAD MARKINGS
 - PROPOSED YELLOW ROAD MARKINGS
 - EXISTING SIGN FACE AND SIGN POST TO REMAIN
 - PROPOSED SIGN FACE ON EXISTING SIGN POST
 - PROPOSED SIGN FACE ON EXISTING SIGN POST
 - EXISTING LIGHTING COLUMN TO REMAIN
 - EXISTING SIGN FACE ON EXISTING LIGHTING COLUMN
 - PROPOSED LIGHTING COLUMN
 - PROPOSED TRAFFIC SIGNAL LOCATION
 - PROPOSED HANDICAPEN

REV	DATE	DESCRIPTION	DESIGNED	CHECKED	APPROVED	AUTHORIZED

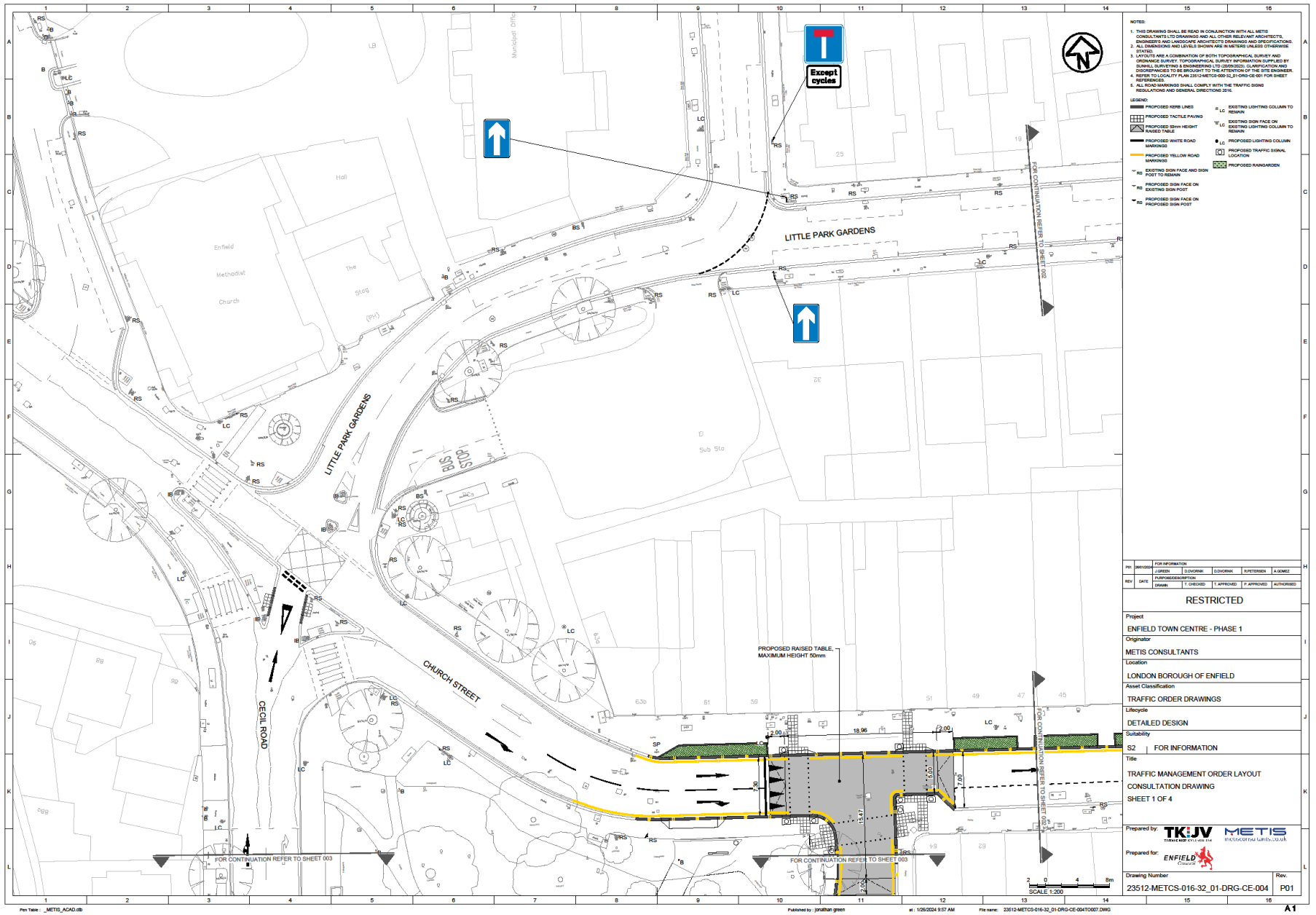
RESTRICTED

Project: ENFIELD TOWN CENTRE - PHASE 1
 Originator: METIS CONSULTANTS
 Location: LONDON BOROUGH OF ENFIELD
 Asset Classification: TRAFFIC ORDER DRAWINGS
 Lifecycle: DETAILED DESIGN
 Subcategory: S2 | FOR INFORMATION
 Title: TRAFFIC MANAGEMENT ORDER LAYOUT CONSULTATION DRAWING SHEET 1 OF 4

Prepared by: **TKJV** METIS
TRAFFIC MANAGEMENT CONSULTANTS
TRAFFIC MANAGEMENT CONSULTANTS

Prepared for: **ENFIELD** Council

Drawing Number: 23512-METCS-016-32_01-DRG-CE-004 Rev: P01



- NOTES:**
1. THIS DRAWING SHALL BE MADE IN CONJUNCTION WITH ALL RELEVANT CONSULTANTS LTD DRAWINGS AND ALL OTHER RELEVANT ARCHITECTS, ENGINEERS AND LANDSCAPE ARCHITECTS DRAWINGS AND SPECIFICATIONS. ALL DIMENSIONS AND LEVELS SHOWN ARE IN METERS UNLESS OTHERWISE STATED.
 2. LAYOUTS ARE A COMBINATION OF BOTH TOPOGRAPHICAL SURVEY AND GEODESIC SURVEY. TOPOGRAPHICAL SURVEY INFORMATION SUPPLIED BY A RELEVANT SURVEYOR'S ENGINEERING LTD (OR OTHER). CLARIFICATION AND DISCREPANCIES TO BE BROUGHT TO THE ATTENTION OF THE SITE ENGINEER. REFER TO LOCALITY PLAN 251 (METCS-016-32_01) FOR SHEET REFERENCES.
 3. ALL ROAD MARKINGS SHALL COMPLY WITH THE TRAFFIC SIGNS REGULATIONS AND GENERAL DIRECTIONS 2016.
- LEGEND:**
- PROPOSED KERNE LINES
 - PROPOSED TACTILE PAVING
 - PROPOSED SIGN HEIGHT RAISED TABLE
 - PROPOSED WHITE ROAD MARKINGS
 - PROPOSED YELLOW ROAD MARKINGS
 - EXISTING SIGN FACE AND SIGN POST TO REMAIN
 - PROPOSED SIGN FACE ON EXISTING SIGN POST
 - PROPOSED SIGN FACE ON PROPOSED SIGN POST
 - EXISTING LIGHTING COLUMN TO REMAIN
 - EXISTING SIGN FACE ON EXISTING LIGHTING COLUMN TO REMAIN
 - PROPOSED LIGHTING COLUMN LOCATION
 - PROPOSED TRAFFIC SIGNAL LOCATION
 - PROPOSED KERNSIDE

REV	DESCRIPTION	DATE	BY	CHECKED	APPROVED	AUTHORISED

RESTRICTED

Project
ENFIELD TOWN CENTRE - PHASE 1

Originator
METIS CONSULTANTS

Location
LONDON BOROUGH OF ENFIELD

Asset Classification
TRAFFIC ORDER DRAWINGS

Lifecycle
DETAILED DESIGN

Sustainability
S2 | FOR INFORMATION

Title
TRAFFIC MANAGEMENT ORDER LAYOUT
CONSULTATION DRAWING
SHEET 1 OF 4

Prepared by
TKJV METIS
TOWN CENTRE URBAN DESIGN

Prepared for
ENFIELD
Council

Drawing Number
23512-METCS-016-32_01-DRG-CE-004

Rev
P01

