



# Holiday Play and Leisure Activities for Children and Young People with SEND

Summer 2024



This booklet is designed to provide parents/carers with information about play and leisure activities that are available for children and young people with SEND.

The information in this booklet is not exhaustive, and inclusion in this booklet does not mean that the Joint Service for Disabled Children endorses the activities.

It is split into three sections:

### **1. Universal Activities**

These are inclusive activities that intended to be accessible to all children and young people. You should talk directly with the provider to find out whether they can meet the needs of your child. You need to book and pay for these activities yourself. If you are in receipt of a Short Breaks Grant you can use this funding to pay for the activities.

### **2. Universal Plus Activities**

These are activities for children and young people with SEND who need some additional support. You need to book and pay for these activities yourself. If you are in receipt of a Short Breaks Grant you can use this funding to pay for the activities.

### **3. Specialist Activities**

These activities are for children and young people with SEND, who have complex needs. You may be referred to the activity and it will form part of your package of care. You can however, buy additional days directly from the provider, as can parents/carers who do not receive a care package.

Don't forget you can find this booklet and more information about activities and things to do in Enfield on the [Local Offer](#).



# Universal Activities

The following provides an overview of some Universal activities. See websites for more information. Please talk directly with the provider to find out whether they can meet the needs of your child.

TIMES	PROVIDER	ACTIVITIES	OFSTED	AGE	COST & CONTACT
Various	Chickenshed 290 Chase Side London N14 4PE	Chickenshed is based on a belief that everyone can flourish when everyone is included. They provide support to those who need it.  They run a variety of workshops, inclusive theatre and events during the school holidays.  Please visit the website for more information and to see what events are on.		0 – 18 depending on activity	COST: Depends on activity. See website for more info.  CONTACT: <a href="https://www.chickenshed.org.uk/Event/autumn-days">https://www.chickenshed.org.uk/Event/autumn-days</a>  Email: <a href="mailto:info@chickenshed.org.uk">info@chickenshed.org.uk</a>
8am – 6pm	Funny Feet Holiday Club Galliard Primary School Galliard Road London N9 7PE	Funny Feet offers an inclusive environment where children feel free to be themselves and socialise with children of various ages and culture. The children participate in fun activities and have access to a multitude of play opportunities. We also arrange outings to cinemas, parks, seaside, adventure playgrounds and other interesting and fun places.	Yes	4 – 12	COST: Contact provider for cost  CONTACT: <a href="https://www.funny-feet.co.uk/">https://www.funny-feet.co.uk/</a>  Tel: 07521162527
9am – 11.45am  9am – 3pm  9am – 5pm	Kalo Sport Hazelwood Sports Club Ridge Avenue Winchmore Hill London N21 2AJ	Indoor and outdoor sports facilities including Tennis, football, multi-sport. A clubhouse where children can watch age appropriate cartoons and older children can use wi-fi during breaks and at lunch	Yes	4 - 16	COST: £25 per half day £40 per full day (9am – 3pm) £50 per full day (9am – 5pm)  CONTACT: <a href="https://www.kalosport.com/hazelwood-sports-camp/">https://www.kalosport.com/hazelwood-sports-camp/</a>  Tel: 020 8360 4273 Email: <a href="mailto:info@kalosport.com">info@kalosport.com</a>



TIMES	PROVIDER	ACTIVITIES	OFSTED	AGE	COST & CONTACT
8am – 6pm	Sticky Fingers St George's CoE Primary School Hertford Road Enfield EN3 6NR	We provide holiday play schemes for children 4 to 12 years of age. There is a multitude of activities and trips for the children to get involved in, such as outings to the fair, bowling, cinema, theatres, picnics, swimming, museums, farms, ice-skating, fun houses etc.	Yes	4 - 12	COST: £20 per day  CONTACT: <a href="https://stickyfingersenfield.co.uk/">https://stickyfingersenfield.co.uk/</a>  Email: <a href="mailto:sheniz@stickyfingersenfield.co.uk">sheniz@stickyfingersenfield.co.uk</a>  Tel: 07732385075
8.00am – 6.15pm	Walker Children's Club Walker Hall The Green Waterfall Road Southgate N14 7EG	An inclusive holiday play scheme which offers a wide variety of entertaining activities, games, crafts and sport to meet all ages and all needs. Quieter chill out zones to relax and read. There's always someone on hand to help.	Yes		COST: £26 per day £24 per day sibling discount  CONTACT: <a href="https://walkerchildrensclub.com/book-online-2">https://walkerchildrensclub.com/book-online-2</a>  07961 485646 020 8920 9500  <a href="http://www.walkerchildrensclub.com">www.walkerchildrensclub.com</a>
9am – 5pm	Time for Change Holiday Club 149 Firs Lane London N21 3ER	Holiday club runs every school holiday and includes the following activities: <ul style="list-style-type: none"> <li>● Slime making</li> <li>● Tag rugby</li> <li>● Boxercise kids</li> <li>● Zumba/Bokwa</li> <li>● Arts and Crafts</li> <li>● Dodgeball</li> <li>● Gymnastics</li> <li>● Dance</li> <li>● Cooking</li> <li>● Trips to the park</li> </ul>			COST: £26 per day £6 early £6 late 30% sibling discount  CONTACT: <a href="mailto:holidayclub@annmarietimeforchange.com">holidayclub@annmarietimeforchange.com</a>

# HAF Enfield Summer 2024

29<sup>th</sup> July –  
30<sup>th</sup> August



Ages  
Reception  
to Year 11

**FREE\*** places available on  
Enfield's Holiday Activities and  
Food (HAF) programme this  
summer. For more information  
visit

**Holiday activities and food  
programme | Enfield Council**  
\*Free for those in receipt of  
benefits related free school meals



Arts &  
Crafts

Get  
Active

Free  
nutritious  
meals

Cooking

Day  
Trips

Plus  
much  
much  
more!

Funded by



Department  
for Education

[www.enfield.gov.uk/services/children-and-education/  
holiday-activity-and-food-programmes#haf-programme](http://www.enfield.gov.uk/services/children-and-education/holiday-activity-and-food-programmes#haf-programme)

**ENFIELD**  
Council



# Universal Plus Activities



# SEND Summer Cycling Fun

**Bush Hill Park**  
**Lincoln Rd, Enfield EN1 1JX**

**Tuesday 23rd July**  
**Tuesday 30th July**  
**Tuesday 6th August**  
**Tuesday 13th August**

**Ages 8 – 25 years**  
**Sessions can be booked at**  
**half hourly intervals**

**10am, 10.30am, 11am, 11.30am**  
**12noon, 1pm, 1.30pm, 2pm, 2.30pm**

There will be  
a variety of  
accessible bikes for  
children and young  
people to try out  
and improve their  
cycling skills.



To book your place please email [bike@enfield.gov.uk](mailto:bike@enfield.gov.uk) with your child or young person's name, age, school/college, and the date and time they would like to attend.

[www.enfield.gov.uk](http://www.enfield.gov.uk)

Inclusive swimming and gym sessions are available at Southbury Leisure Centre.



## **Inclusive Swimming Session**

Each Sunday 15:00-16:00pm we offer an inclusive swimming session which allows young people and adults with additional needs and disabilities to use the pool, benefitting from reduced capacity and noise.

Sessions start at just £3.60 per swimmer or free as part of a Better HF membership.



## **Inclusive Gym Session**

Our inclusive gym sessions are ideal for adults and young people to exercise together and get the support needed from one of our dedicated fitness instructors, getting healthy and having fun.

Sessions start at just £3.60 per person or free as part of a Better HF membership.

Come and join us...



# SEND Youth Centre



Healthy  
relationship  
workshops



Personal  
safety



Support to develop  
life skills



Sports  
sessions

We welcome children and young people with a wide range of differences and we typically have a staff to young person ratio of 1:5

**BELL LANE YOUTH CENTRE, EN3 5PA**

**EVERY TUESDAY**

6.30pm - 8.30pm

**Sign up online today**

to register your interest please see website below

[www.youthenfield.taptub.co.uk](http://www.youthenfield.taptub.co.uk)







<b>Contact name</b>	Faye Makhoulouf
<b>Telephone number</b>	0203 375 9045
<b>Email address</b>	<a href="mailto:faye@endorphins.uk">faye@endorphins.uk</a>
<b>Website address</b>	<a href="http://www.endorphins.uk">www.endorphins.uk</a>
<b>Usual Venue</b>	Eastfield Primary School Eastfield Road Enfield EN3 5UX
<b>Type of activity provided</b>	<ul style="list-style-type: none"> <li>• Our inclusive holiday spectacular sessions will provide a safe and supportive environment for SEND children and young people.</li> <li>• Whether it's arts and crafts, drama, dance or inclusive activities – then our Superstar sessions are the place to be in Enfield over the holidays.</li> <li>• Our experienced team is focused on delivering sessions that promote fun and friendships.</li> <li>• Sessions are pre-bookable only so we can ensure we can provide an excellent level of care with a staff ratio of 1:3.</li> </ul>
<b>Support available for children and young people with SEND, eg, hearing impairment, visual impairment, wheelchair accessibility, personal care</b>	Our 1:3 staff to participant ratio ensures we can support a wide range of disabilities and additional needs in our accessible venues.
<b>Age range</b>	8 – 14 years
<b>Staffing ratio</b>	1:3
<b>Ofsted registered</b>	Yes
<b>Cost per session</b>	£60 per day A subsidised rate of £20 per day, for one day only, if not in receipt of any other funding, services or support.
<b>Number of places available</b>	10
<b>Can new referrals be accepted?</b>	Yes
<b>Any other relevant information</b>	



## Spring and Summer Playschemes

Please refer to the website  
<http://www.endorphins.uk>  
or contact the provider for dates

Faye Makhoulouf  
Tel: 020 3375 9045  
Email: [faye@endorphins.uk](mailto:faye@endorphins.uk)

# Specialist Activities





## ALWA Specialist Play Scheme

<b>Contact name</b>	Tee Richards
<b>Telephone number</b>	07306 403908
<b>Email address</b>	<a href="mailto:info@abundantlivingwithautism.org.uk">info@abundantlivingwithautism.org.uk</a>
<b>Website address</b>	<a href="http://www.abundantlivingwithautism.org.uk">www.abundantlivingwithautism.org.uk</a>
<b>Usual Venue</b>	Russet House School 11 Autumn Close Enfield EN1 4JA
<b>Type of activity provided</b>	<ul style="list-style-type: none"><li>• Bouncy Castle</li><li>• Ride on car</li><li>• Outdoor Play</li><li>• Trampoline</li><li>• Soft Play Room</li><li>• Arts and Crafts</li><li>• Cooking</li><li>• Sensory/Water/Messy Play</li></ul>
<b>Support available for children and young people with SEND, eg, hearing impairment, visual impairment, wheelchair accessibility, personal care</b>	For Autistic Children
<b>Age range</b>	5 to 13 years
<b>Staffing ratio</b>	Typically, 1 staff member to 3 children Additional staffing assessed on numbers in session, the needs and behaviours of children attending and if one to one support is required
<b>Ofsted registered</b>	Yes
<b>Is personal care provided?</b>	Yes
<b>Cost per session</b>	£75 per day £37.50 for half day £95 per day for one to one support
<b>Number of places available</b>	24
<b>Can new referrals be accepted?</b>	Yes
<b>Any other relevant information</b>	

## Summer Playscheme

DATE	TIME	VENUE
Monday 29 <sup>th</sup> July 2024	10am – 3pm	Russet House School 11 Autumn Close Enfield EN1 4JA
Tuesday 30 <sup>th</sup> July 2024	10am – 3pm	As above
Wednesday 31 <sup>st</sup> July 2024	10am – 3pm	As above
Monday 5 <sup>th</sup> August 2024	10am – 3pm	As above
Tuesday 6 <sup>th</sup> August 2024	10am – 3pm	As above
Wednesday 7 <sup>th</sup> August 2024	10am – 3pm	As above
Monday 12 <sup>th</sup> August 2024	10am – 3pm	As above
Tuesday 13 <sup>th</sup> August 2024	10am – 3pm	As above
Wednesday 14 <sup>th</sup> August 2024	10am – 3pm	As above
OCTOBER HALF TERM		
Monday 28 <sup>th</sup> October 2024	10am – 3pm	As above
Tuesday 29 <sup>th</sup> October 2024	10am – 3pm	As above
Wednesday 30 <sup>th</sup> October 2024	10am – 3pm	As above



<b>Telephone number</b>	07599609083
<b>Email address</b>	<a href="mailto:Info@BrighterLightSupport.co.uk">Info@BrighterLightSupport.co.uk</a>
<b>Website address</b>	<a href="http://www.brighterlightsupport.co.uk">www.brighterlightsupport.co.uk</a>
<b>Usual Venue</b>	Durants School Pitfield Way Enfield EN3 5BY
<b>Type of activity provided</b>	<ul style="list-style-type: none"> <li>• Spacious and airy classrooms</li> <li>• Sporting equipment</li> <li>• Outdoor play/garden</li> <li>• Indoor play areas</li> <li>• Safe spaces and calming regulatory areas</li> <li>• Trampoline</li> <li>• Soft Play</li> <li>• Arts and Crafts</li> <li>• Cooking</li> <li>• Sensory/Water/Messy Play</li> <li>• Interactive technological play</li> </ul>
<b>Support available for children and young people with SEND, eg, hearing impairment, visual impairment, wheelchair accessibility, personal care</b>	Support is available for SEND but no wheelchair access. Personal care is provided dependent on level of need. (can be discussed prior to booking)
<b>Age range</b>	11 – 17 years
<b>Staffing ratio</b>	1:4 depending on need 1:1 is available but must be discussed
<b>Ofsted registered</b>	No
<b>Is personal care provided?</b>	Yes – must be discussed prior to attendance
<b>Cost per session</b>	£75 per day (10am–3pm) £37.50 per half day (12.30pm–3pm) £95 per day with one-to-one support
<b>Number of places available</b>	20 places per day
<b>Can new referrals be accepted?</b>	Yes
<b>Any other relevant information</b>	





## Summer Playscheme

DATE	TIME	VENUE
Monday 29 <sup>th</sup> July 2024	10am – 3pm	Durants School Pitfield Way Enfield EN3 5BY
Tuesday 20 <sup>th</sup> July 2024	10am – 3pm	As above
Wednesday 31 <sup>st</sup> July 2024	10am – 3pm	As above
Monday 5 <sup>th</sup> August 2024	10am – 3pm	As above
Tuesday 6 <sup>th</sup> August 2024	10am – 3pm	As above
Wednesday 7 <sup>th</sup> August 2024	10am – 3pm	As above
Monday 12 <sup>th</sup> August 2024	10am – 3pm	As above
Tuesday 13 <sup>th</sup> August 2024	10am – 3pm	As above
Wednesday 14 <sup>th</sup> August 2024	10am – 3pm	As above

<b>Contact name</b>	Tracy Hammond
<b>Telephone number</b>	0207 607 8762 07932 576 977
<b>Email address</b>	<a href="mailto:TracyH@centre404.org.uk">TracyH@centre404.org.uk</a>
<b>Venue address</b>	Rose Taylor Centre 55B The Sunny Road Forty Hill EN3 5EF
<b>Type of activity provided</b>	<ul style="list-style-type: none"> <li>• Multisport</li> <li>• Day Trips</li> <li>• Creative Play</li> </ul>
<b>Support available for children and young people with SEND, eg, hearing impairment, visual impairment, wheelchair accessibility, personal care</b>	1:1 support available  Personal Care, Positive Behavioural Support, Wheelchair Accessible, staff trained and experienced working with CYP with Learning Disabilities and Autism.
<b>Age range</b>	8 – 17 years
<b>Staffing ratio</b>	1:1 or 1:3 support
<b>Ofsted registered</b>	No
<b>Cost per session</b>	Free for children receiving free school meals: please book online with your e-voucher. £110 per day £125 per day with 1:1 support
<b>Can new referrals be accepted?</b>	Yes
<b>Any other relevant information</b>	Centre 404 provides support to children and young people with Learning Disabilities and Autism. We have worked with children and young people for several decades. Our aim is to provide fun, creative, and person-centred activities that promote socialisation and communication, healthy eating and well-being, enhance life-skills, and independence.

Please refer to the website  
[Centre 404 | For people with learning disabilities,  
autism and their families.](#)  
or contact the provider for dates

Tel: 0207 607 8762  
07932 576 977  
Email: [TracyH@centre404.org.uk](mailto:TracyH@centre404.org.uk)





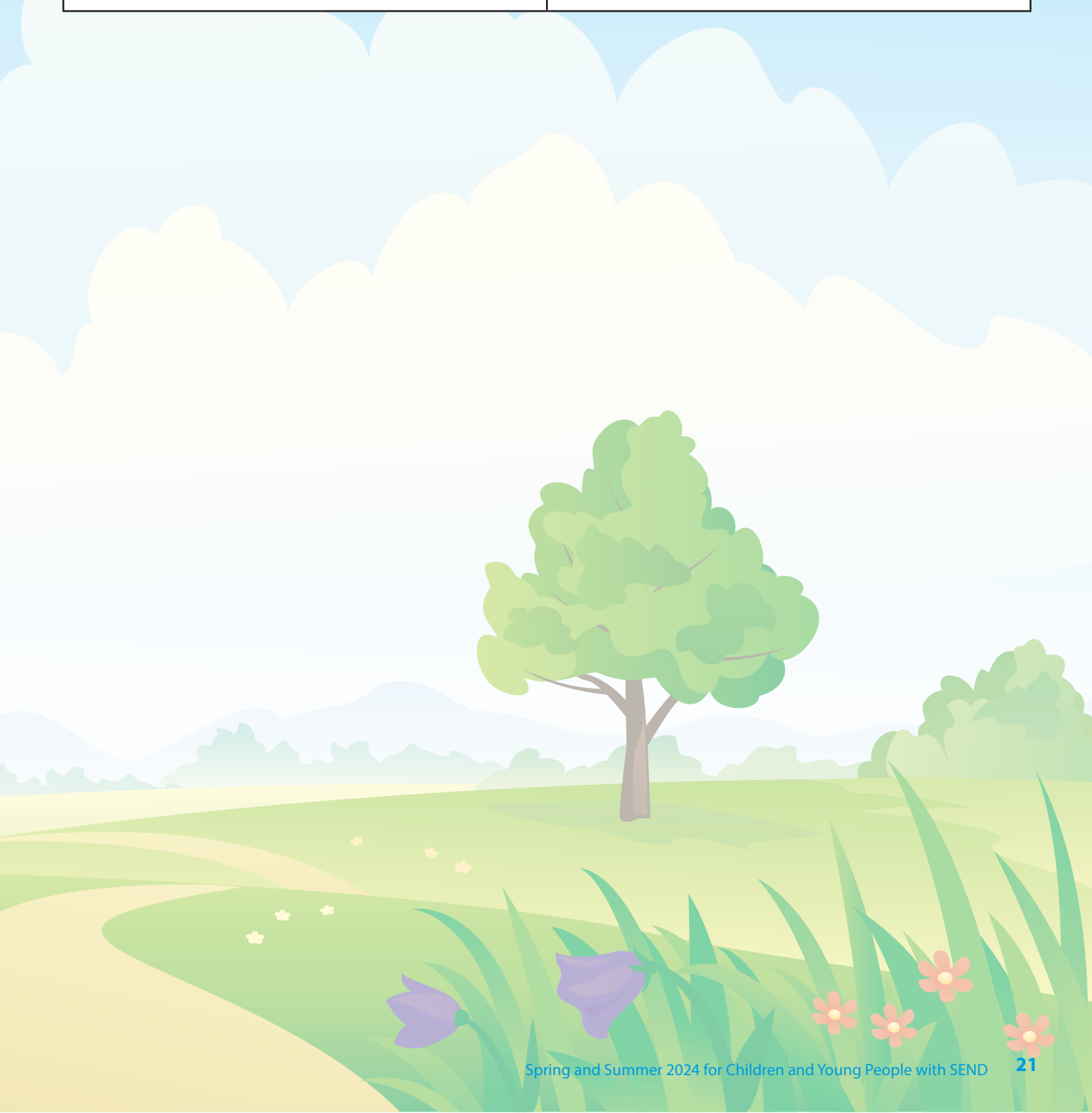
<b>Contact name</b>	Loraine Stock
<b>Telephone number</b>	07810 485126
<b>Email address</b>	<a href="mailto:Loraine.vips@gmail.com">Loraine.vips@gmail.com</a>
<b>Website address</b>	<a href="https://veryimportantpeopleservices.co.uk/">https://veryimportantpeopleservices.co.uk/</a>
<b>Usual Venue</b>	Community of Christ Church 49 Lancaster Road Enfield EN2 0BD
<b>Type of activity provided</b>	<ul style="list-style-type: none"> <li>• Arts and crafts</li> <li>• cooking</li> <li>• puzzles, board games</li> <li>• karaoke,</li> <li>• park [depending on the weather],</li> <li>• small play, sensory play, Lego, Duplo,</li> <li>• DVDs, iPads, Playstation</li> <li>• socializing, bowling etc.</li> </ul> <p>We try to meet needs of the young people booked on at this time, so it's very helpful if parents can provide information for us about their young person's favourite activities.</p>
<b>Support available for children and young people with SEND, eg, hearing impairment, visual impairment, wheelchair accessibility, personal care</b>	Yes
<b>Age range</b>	8+
<b>Staffing ratio</b>	Depends on need
<b>Ofsted registered</b>	n/a
<b>Is personal care provided?</b>	Yes
<b>Cost per session</b>	£55.00 £67.50 with transport £80.00 with transport and 1:1
<b>Number of places available</b>	Dependent on support and dates required
<b>Can new referrals be accepted</b>	No
<b>Any other relevant information</b>	



## Summer Playschemes

Please refer to the website  
<https://veryimportantpeopleservices.co.uk>  
or contact the provider for dates

Loraine Stock  
Tel: 07810 485126  
Email: [loraine.vips@gmail.com](mailto:loraine.vips@gmail.com)



<b>Contact name</b>	Lee Bagley
<b>Telephone number</b>	07951 521848
<b>Email address</b>	<a href="mailto:lbagley@westleaschool.co.uk">lbagley@westleaschool.co.uk</a>
<b>Website address</b>	<a href="http://www.westleaschool.co.uk">www.westleaschool.co.uk</a>
<b>Usual Venue</b>	Haselbury Campus Haselbury Road Edmonton N9 9TU
<b>Type of activity provided</b>	Multicultural cooking model building free time painting indoor games book corner Lego film club sports. Outing's bowling, riding bikes in Bush Hill Park Crazy golf and day out to Cyder park/picnic
<b>Support available for children and young people with SEND, eg, hearing impairment, visual impairment, wheelchair accessibility, personal care</b>	Autism visual impaired Wheelchair accessibility Epilepsy
<b>Age range</b>	8 - 18 years
<b>Staffing ratio</b>	3 students –1 member of staff
<b>Ofsted registered</b>	Yes school is
<b>Is personal care provided?</b>	Yes
<b>Cost per session</b>	£38.00 per session
<b>Number of places available</b>	30
<b>Can new referrals be accepted</b>	No
<b>Any other relevant information</b>	

## Summer Playscheme

DATE	TIME	VENUE
Thursday 25 <sup>th</sup> July 2024	10am – 3pm	Haselbury Campus Haselbury Road Edmonton N9 9BY
Friday 26 <sup>th</sup> July 2024	10am – 3pm	As above
Thursday 1 <sup>st</sup> August 2024	10am – 3pm	As above
Friday 2 <sup>nd</sup> August 2024	10am – 3pm	As above
Thursday 8 <sup>th</sup> August 2024	10am – 3pm	As above
Friday 9 <sup>th</sup> August 2024	10am – 3pm	As above
Thursday 15 <sup>th</sup> August 2024	10am – 3pm	As above
Friday 16 <sup>th</sup> August 2024	10am – 3pm	As above



