

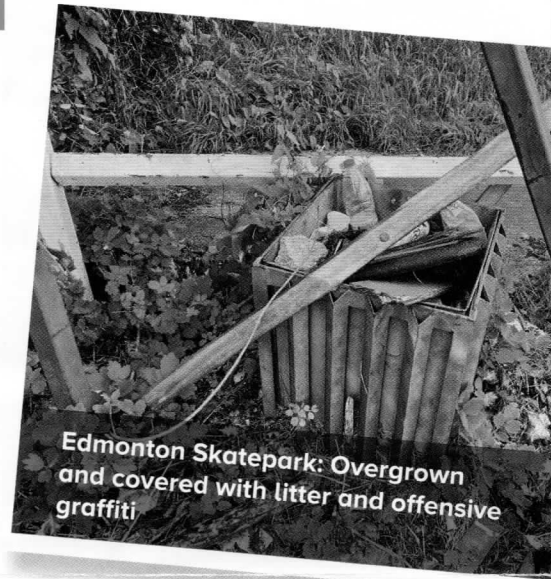
CALL FOR ACTION ON EDMONTON SKATEPARK DISREPAIR

■ The skatepark, near the junction of Church Street and Great Cambridge Road, has been allowed to get into a shocking state by Enfield's Labour council. Overgrown and covered with litter and offensive graffiti, we have been pushing for the council for five months to sort the site out.

rubbish, fixing broken floodlights and dealing with uneven/unsafe access footpaths. Crucially, the damage done to the surface when it was used as access for the cemetery works, has yet to be reinstated leaving it covered in loose gravel and a danger for skate boarders.

So far some modest actions have been taken, with some litter and graffiti being removed and the grass cut. However, there is still much to be done including removing the remaining

We will continue to push Enfield Council to honour its responsibilities and bring the skatepark back to an acceptable condition. Let us know your thoughts.



HAVE YOUR SAY!

If you have an issue or concern about council services, return this slip to the address below or email us. We'd love to hear your views...

HOW CAN YOU HELP?

- Join the local party
- Deliver leaflets
- Attend social events
- Vote by post
- Display a poster
- Make a donation

Your views

Do we really need an extra crematorium? Could the 2 we already have be expanded or renovated? I am not aware of a long wait for funerals.

...Contd. on attach. sheet.

Name

Address

Email



Bush.hill.park.conservatives@outlook.com

**Return to: Edmonton Conservatives
c/o 13 Deansway, Edmonton N9 9TX.**

How we use your data Some data we receive from you will probably comprise personal data about you and may include sensitive personal data. The types of information we may collect about you will probably include your name, address and contact information and information about your ethnic origin, political opinions, and religious, philosophical and other beliefs. The data you provide will be retained by the Conservative Party and Edmonton Conservative Association/Peter Fallart, James Hockney, Clare de Silva ("the data holders") in accordance with the provisions of the Data Protection Act 1998 and related legislation. The data holders will use the data we collect for the following purposes: (i) to improve our understanding of political life in the United Kingdom; (ii) to compile and provide anonymous statistics about voters in the United Kingdom; (iii) to facilitate our operation as a political party; (iv) contact you in the future by telephone, text or other means, even though you may be registered with the Telephone Preference Service, without asking for further permission. Your data will not be sold or given to anyone not connected to the Conservative Party. If you do not want the information you give to us to be used in these ways, or for us to contact you, please indicate by ticking the relevant boxes: Post Email SMS Phone

Promoted by Adrian Croshaw, on behalf of Edmonton Conservatives both of c/o 13 Deansway, London, N9 9TX.
Printed by Cheap Print Ltd, 53 Middlesex Road, Southsea, Hants PO4 8EF.

Fus Farm Wetlands has become so popular with families, joggers + older people. It was a lifesaver during lockdown for exercise + fresh air. Children now have picnics + little parties there. Dog walking is very popular + older people walk + enjoy sitting on the seats. Schools have brought children to learn about nature + pond dipping. To lose the peace + quite of this space would be dreadful for so many people.

- To put a crematorium so close to houses + 2 schools (Fus Farm + Winchmore) would be so detrimental to the area.
- Pollution from the furnaces + extra traffic in Fus lane is unacceptable.
- Traffic will become clogged when children come out of school.

- Edmonton Rec. would also be unenviable as this is also close to houses + a school. The field is used for football + cricket. Crematoriums are usually built well away from houses + schools.

- As for the skateboard park, this should be re-located away from the cemetery. It is not suitable so close to graves where people are visiting. The noise is dreadful. Children have come into the cemetery, eat take aways + throw litter over the graves.