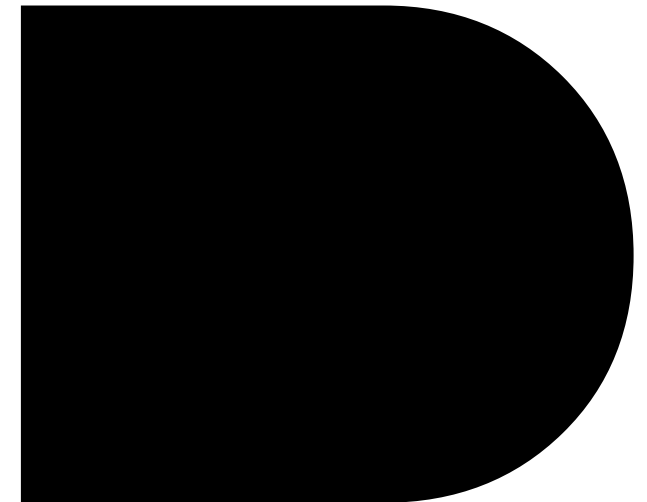
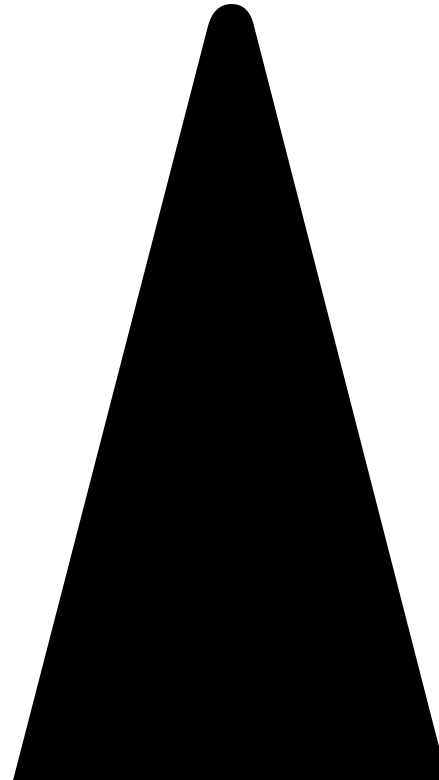
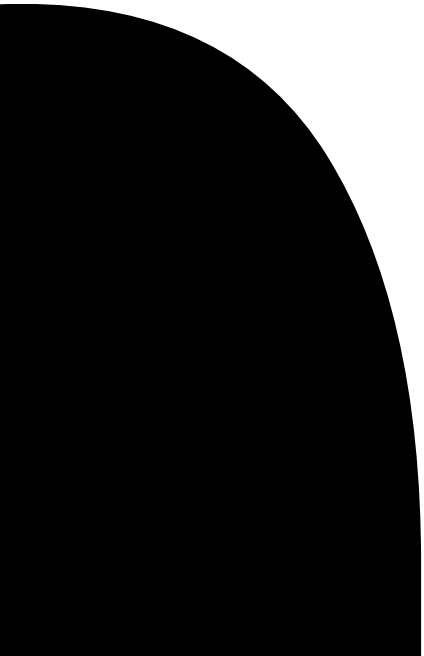

**FAULKNERBROWNS
ARCHITECTS**



**ENFIELD
IGNATIANS
RFC**

Enfield Sports Village
Creating A New Active Community

August 2020



ENFIELD PLAYING FIELDS

AERIAL VIEW FROM NORTHWEST CORNER



Kingsmead School

Southbury Leisure Centre

Playing Fields

Enfield Ignatians Rfc

Enfield Town Fc

Queen Elizabeth Stadium

ACTIVE DESIGN

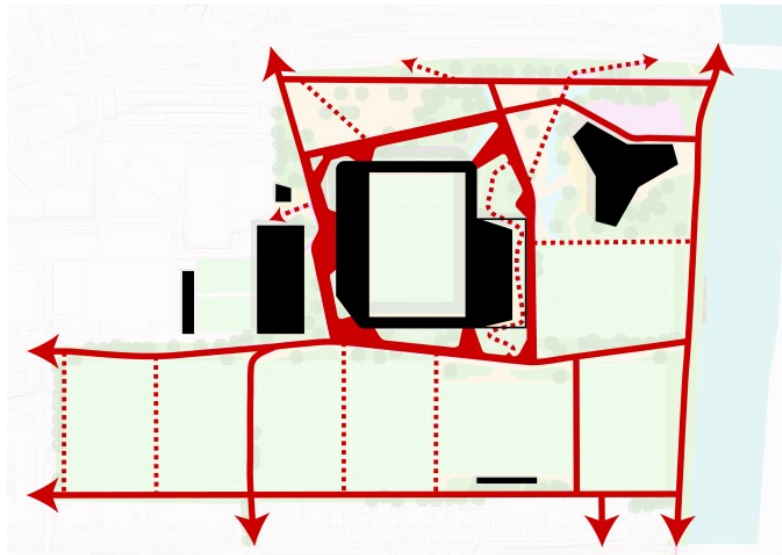
ACTIVE DESIGN



ACTIVE DESIGN – CREATING ACTIVE COMMUNITIES

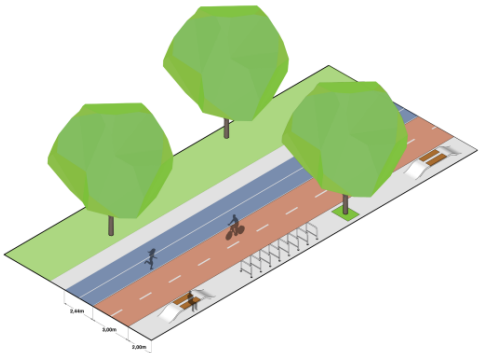


EXAMPLE - SPORTS PARK, HELMOND MASTERPLAN



EXAMPLE - SPORTS PARK, HELMOND

CONCEPT PRECEDENTS

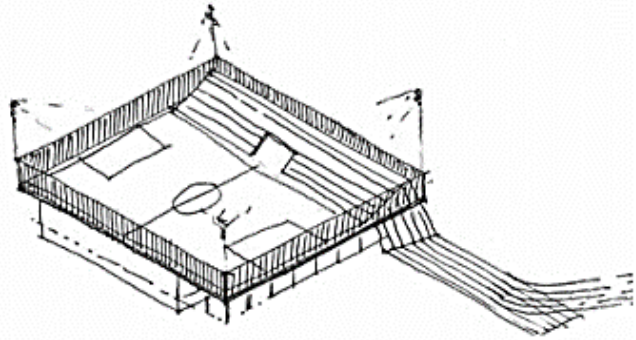
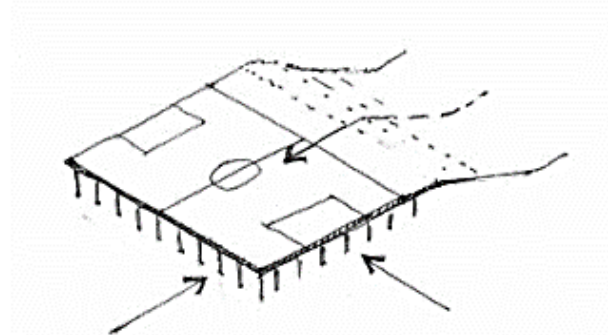
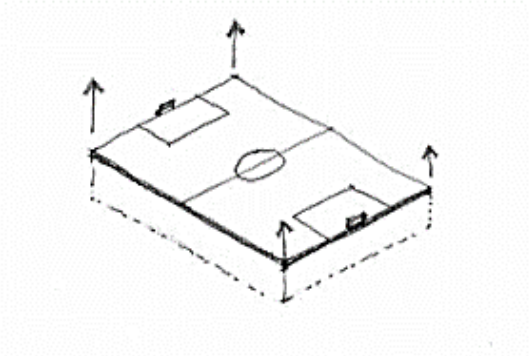
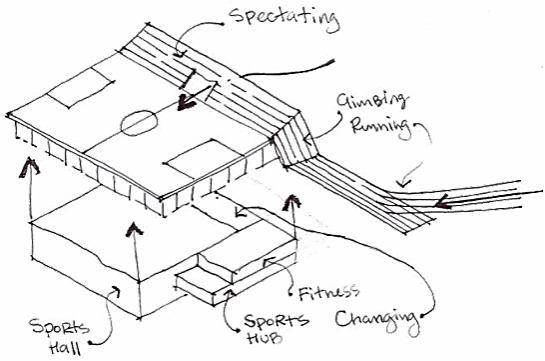


EXAMPLE - DERBY SPORTS MASTERPLAN



EXAMPLE - DERBY SPORTS MASTERPLAN

SPORTS PAVILION



EXAMPLE - UNIVERSITY OF EDINBURGH SPORTS MASTERPLAN VISION



- 1. New Archery range and pavilion
- 2. New direct pedestrian route from Cameron bank
- 3. New Student Sports Village (Layout by Oberlanders)
- 4. New Artificial 3G Rugby/Football Pitch
- 5. New 10 lane warm up track
- 6. New Water based Hockey Pitch and associated training D

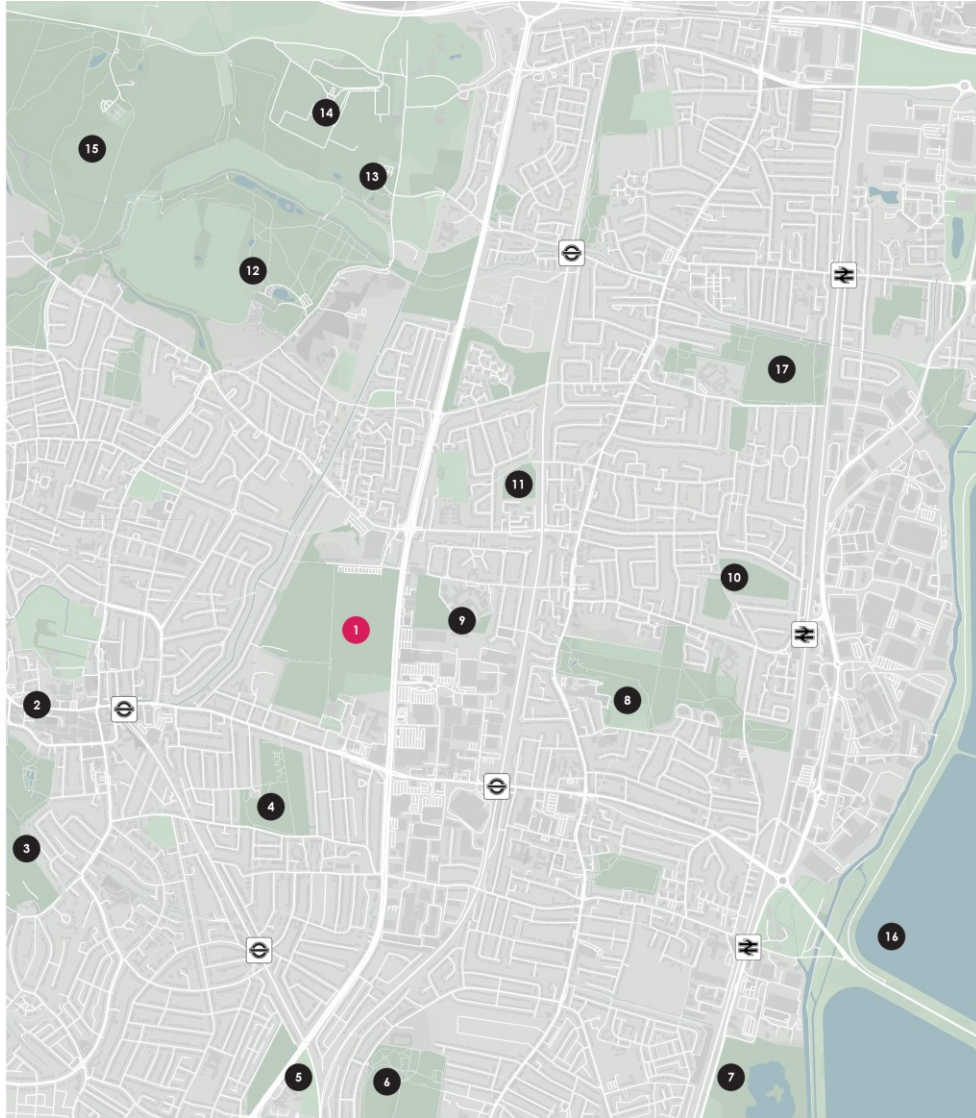
- 7. Car parking provision for 175 cars and 8 coaches
- 8. 4 no. New Artificial 3G MUGA Pitches (potential for 9 no.)
- 9. New Artificial 3G Football Pitch
- 10. New site wide trim trail - 2800m in circumference
- 11. New Main Pavilion building including: team change, official change, strength and conditioning gym, club rooms and club lounges
- 12. New 8 court sports hall



SITE ANALYSIS

SITE ANALYSIS

CONTEXT



1. Enfield Playing Fields
2. Enfield Town Centre
3. Enfield Park
4. Bush Hill Park
5. Power League Enfield
6. Jubilee Park
7. Lee Valley Leisure Complex
8. The College of Haringey, Enfield and North East London
9. Bishop Stopford's School/ Suffolks Primary School
10. Brimsdown Sports & Social Club
11. Enfield Rangers YFC
12. Forty Hall Country Park
13. Lee Valley Regional Park Authority (Myddelton House)
14. Tottenham Hotspur Football Club Training Ground
15. Whitewebbs Park & Golf Course
16. King George's & William Girling Reservoir
17. Albany Park



Queen Elizabeth Stadium

Enfield Town Fc

Enfield Ignatians Rfc

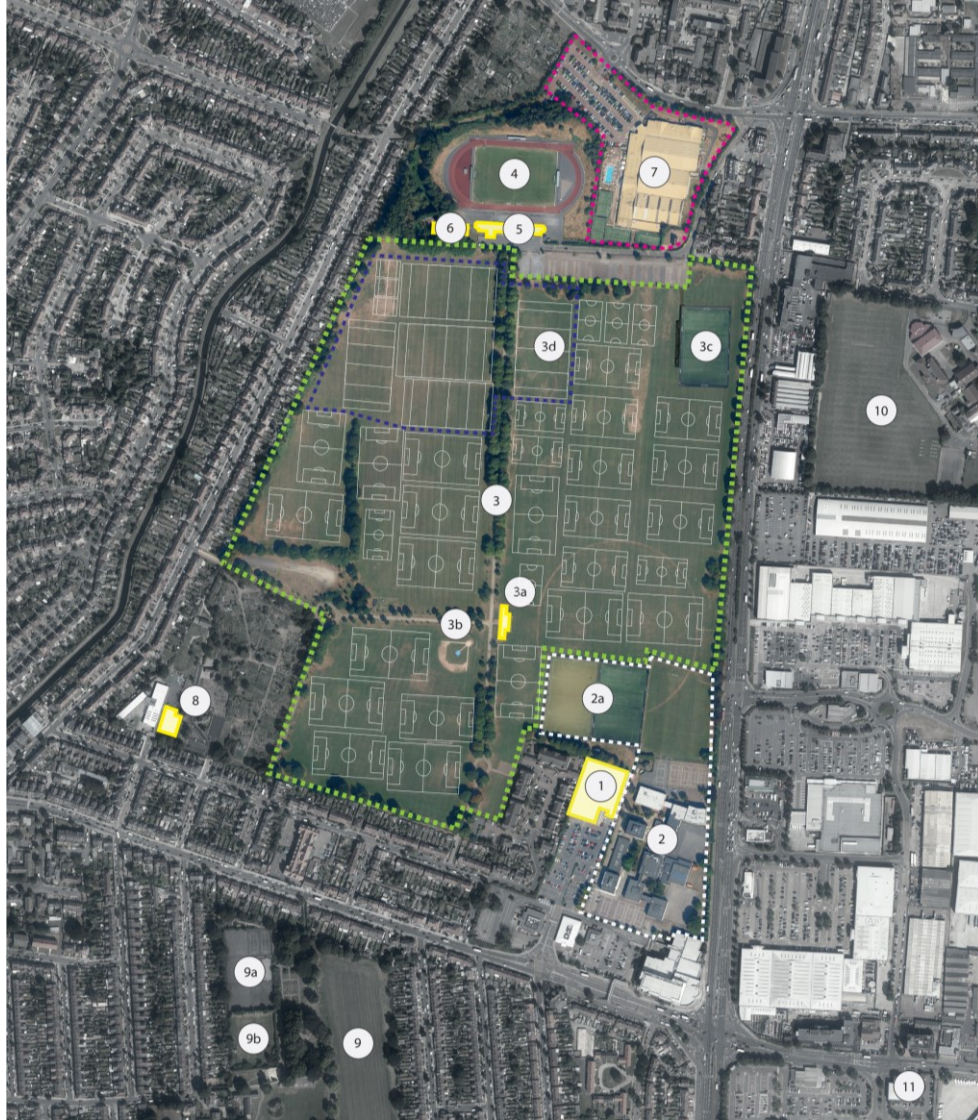
Playing Fields

Southbury Leisure Centre

Kingsmead School

SITE ANALYSIS

CURRENT USE



1. **Southbury Leisure Centre**
2. **Kingsmead School**
 - 2a. Kingsmead School 2/3G Football/ Hockey pitches
3. **Enfield Playing Field**
(33 Football Pitches & 8 Rugby Pitches)
 - 3a. Changing Pavilion
 - 3b. Baseball Diamond
 - 3c. 3G Football Pitch
 - 3d. Rugby pitches Inc. floodlit pitch
4. **Queen Elizabeth Stadium**
5. **Enfield Town FC/ Enfield and Haringey Athletic Club**
6. **Enfield Ignatians Rugby Club**
7. **David Lloyd Fitness & Tennis Centre**
8. **Ellenborough Table Tennis Club**
9. **Bush Hill Park**
 - 9a. Basketball / Tennis Courts
 - 9b. Bowling Greens
10. **Bishop Stopford's School/ Suffolks Primary School**
11. **Pure Gym**



SITE ANALYSIS

ACCESS & CONNECTIVITY



Buses from Enfield Retail Park

Route finder

Bus route	Towards	Bus stops
121	Enfield Lock	10 11 12 13 14 15 16 17 18 19 20 21 22 23 24 25 26 27 28 29 30 31 32 33 34 35 36 37 38 39 40 41 42 43 44 45 46 47 48 49 50 51 52 53 54 55 56 57 58 59 60 61 62 63 64 65 66 67 68 69 70 71 72 73 74 75 76 77 78 79 80 81 82 83 84 85 86 87 88 89 90 91 92 93 94 95 96 97 98 99 100
197	Turnpike Lane	10 11 12 13 14 15 16 17 18 19 20 21 22 23 24 25 26 27 28 29 30 31 32 33 34 35 36 37 38 39 40 41 42 43 44 45 46 47 48 49 50 51 52 53 54 55 56 57 58 59 60 61 62 63 64 65 66 67 68 69 70 71 72 73 74 75 76 77 78 79 80 81 82 83 84 85 86 87 88 89 90 91 92 93 94 95 96 97 98 99 100
217	Edmonton Green	10 11 12 13 14 15 16 17 18 19 20 21 22 23 24 25 26 27 28 29 30 31 32 33 34 35 36 37 38 39 40 41 42 43 44 45 46 47 48 49 50 51 52 53 54 55 56 57 58 59 60 61 62 63 64 65 66 67 68 69 70 71 72 73 74 75 76 77 78 79 80 81 82 83 84 85 86 87 88 89 90 91 92 93 94 95 96 97 98 99 100
231	Waltham Cross	10 11 12 13 14 15 16 17 18 19 20 21 22 23 24 25 26 27 28 29 30 31 32 33 34 35 36 37 38 39 40 41 42 43 44 45 46 47 48 49 50 51 52 53 54 55 56 57 58 59 60 61 62 63 64 65 66 67 68 69 70 71 72 73 74 75 76 77 78 79 80 81 82 83 84 85 86 87 88 89 90 91 92 93 94 95 96 97 98 99 100
307	Enfield Chase	10 11 12 13 14 15 16 17 18 19 20 21 22 23 24 25 26 27 28 29 30 31 32 33 34 35 36 37 38 39 40 41 42 43 44 45 46 47 48 49 50 51 52 53 54 55 56 57 58 59 60 61 62 63 64 65 66 67 68 69 70 71 72 73 74 75 76 77 78 79 80 81 82 83 84 85 86 87 88 89 90 91 92 93 94 95 96 97 98 99 100
513	Barnet Hospital	10 11 12 13 14 15 16 17 18 19 20 21 22 23 24 25 26 27 28 29 30 31 32 33 34 35 36 37 38 39 40 41 42 43 44 45 46 47 48 49 50 51 52 53 54 55 56 57 58 59 60 61 62 63 64 65 66 67 68 69 70 71 72 73 74 75 76 77 78 79 80 81 82 83 84 85 86 87 88 89 90 91 92 93 94 95 96 97 98 99 100
517	Brimsdown	10 11 12 13 14 15 16 17 18 19 20 21 22 23 24 25 26 27 28 29 30 31 32 33 34 35 36 37 38 39 40 41 42 43 44 45 46 47 48 49 50 51 52 53 54 55 56 57 58 59 60 61 62 63 64 65 66 67 68 69 70 71 72 73 74 75 76 77 78 79 80 81 82 83 84 85 86 87 88 89 90 91 92 93 94 95 96 97 98 99 100

Other Buses

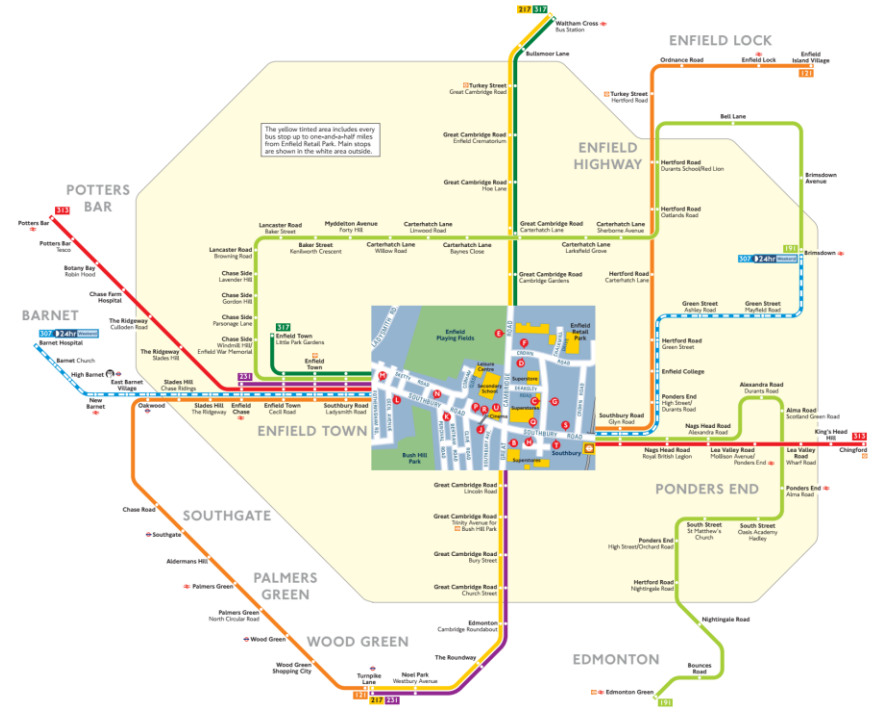
Bus route	Towards	Bus stops
617	Turkey Street Sch	10 11 12 13 14 15 16 17 18 19 20 21 22 23 24 25 26 27 28 29 30 31 32 33 34 35 36 37 38 39 40 41 42 43 44 45 46 47 48 49 50 51 52 53 54 55 56 57 58 59 60 61 62 63 64 65 66 67 68 69 70 71 72 73 74 75 76 77 78 79 80 81 82 83 84 85 86 87 88 89 90 91 92 93 94 95 96 97 98 99 100
629	Turkey Street Sch	10 11 12 13 14 15 16 17 18 19 20 21 22 23 24 25 26 27 28 29 30 31 32 33 34 35 36 37 38 39 40 41 42 43 44 45 46 47 48 49 50 51 52 53 54 55 56 57 58 59 60 61 62 63 64 65 66 67 68 69 70 71 72 73 74 75 76 77 78 79 80 81 82 83 84 85 86 87 88 89 90 91 92 93 94 95 96 97 98 99 100

Key

- Connections with London Underground
- Connections with London Overground
- Connections with National Rail
- Sch School journeys only
- Operates daily with 24-hour service Friday and Saturday nights
- Tube station with 24-hour service Friday and Saturday nights

Ways to pay

- Use your contactless debit or credit card. It's the same fare as Oyster and there is no need to top up.
- Top up your Oyster pay as you go credit or buy Travelcards and bus & tram passes at around 4,000 shops across London.
- Sign up for an online account to top up online and see your travel history and spending



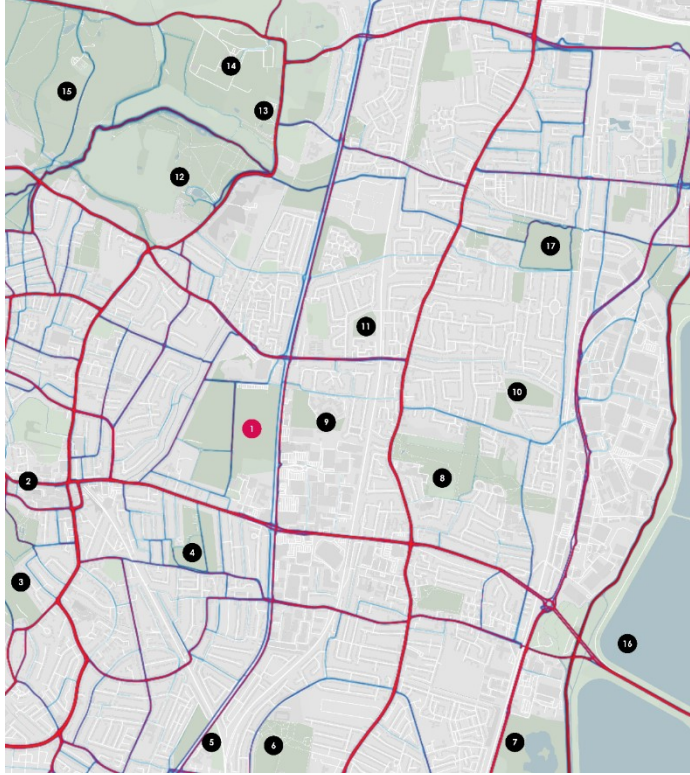
Information correct from 18 November 2014
 © Transport for London TFL32326.10.16.97

Analysis

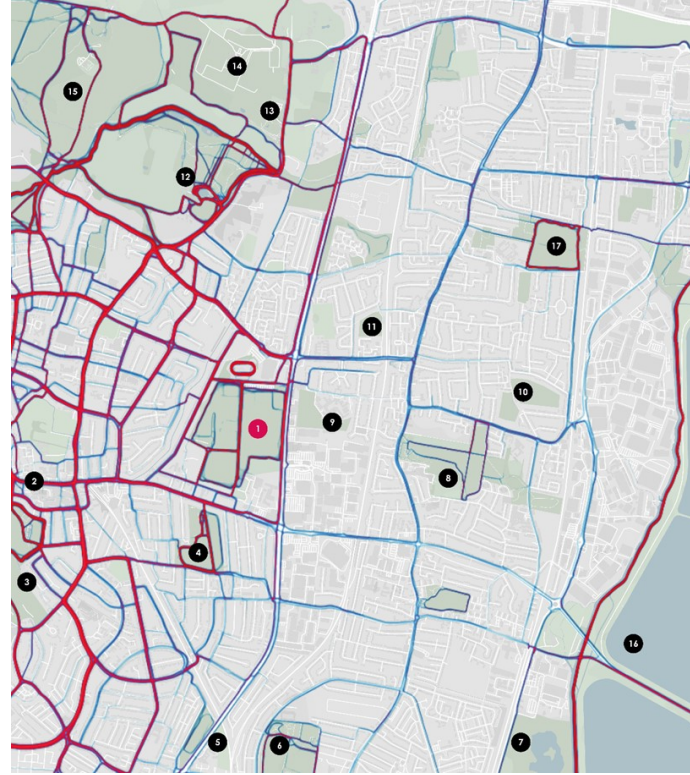
- Current vehicular access poor
- No direct access from A10
- Donkey Lane/ Caterhatch Lane / A10 junction congested
- Ladysmith Road and Sketty Road residential streets
- Reasonable public transport access to South
- Buses connect many parts of Borough

SITE ANALYSIS

ACCESS & CONNECTIVITY



Analysis- Activity Heat map (Cycling)



Analysis- Activity Heat map (running)

Analysis

- A10 = Barrier To Connectivity For Activity
- No Direct Access To Site From East
- Heavily Trafficked And Congested Roads At Access Points To Site
- Poor Connectivity Of Green Spaces to east of A10

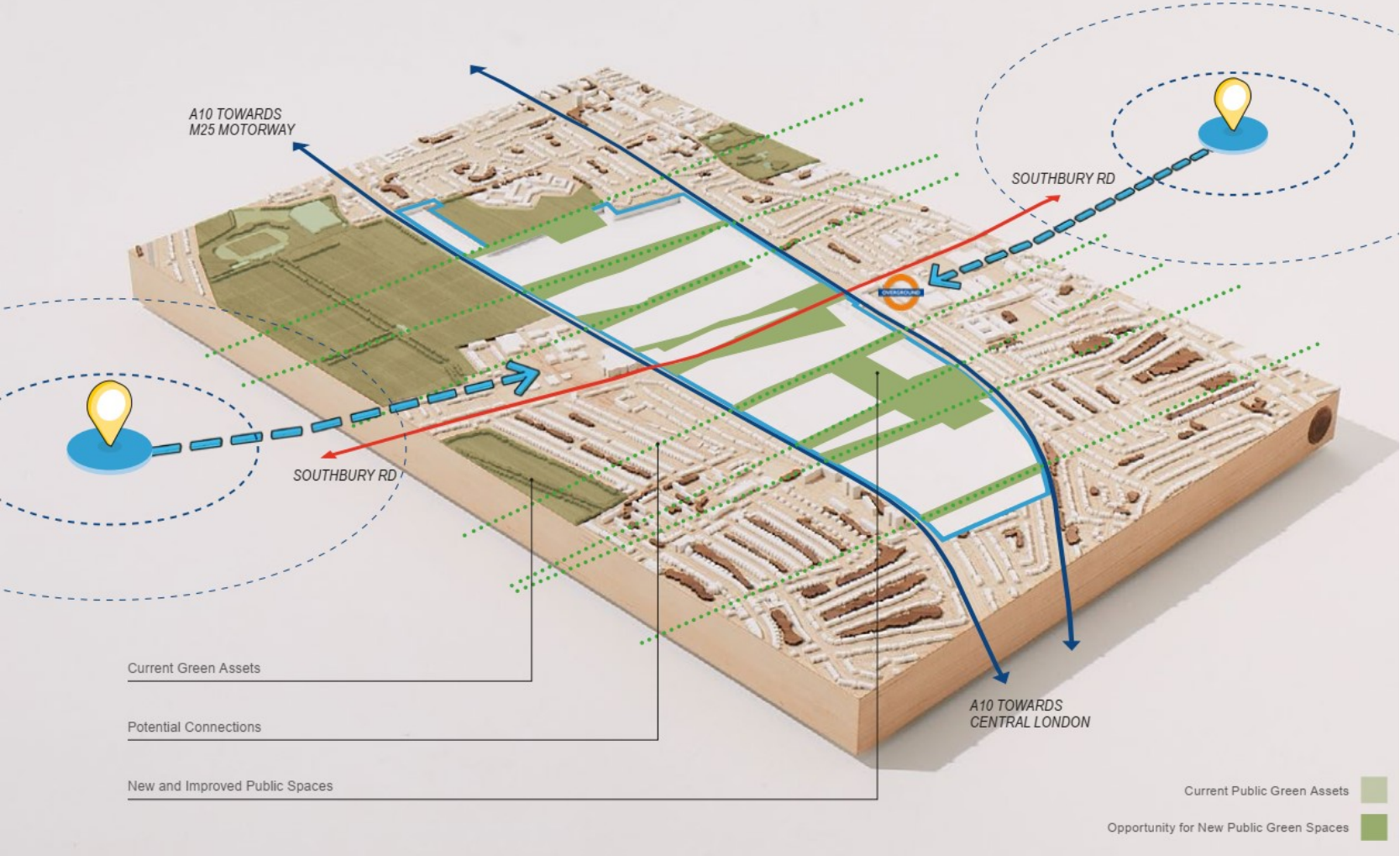


OPPORTUNITIES

OPPORTUNITIES

STRENGTHENING THE EAST WEST CONNECTION

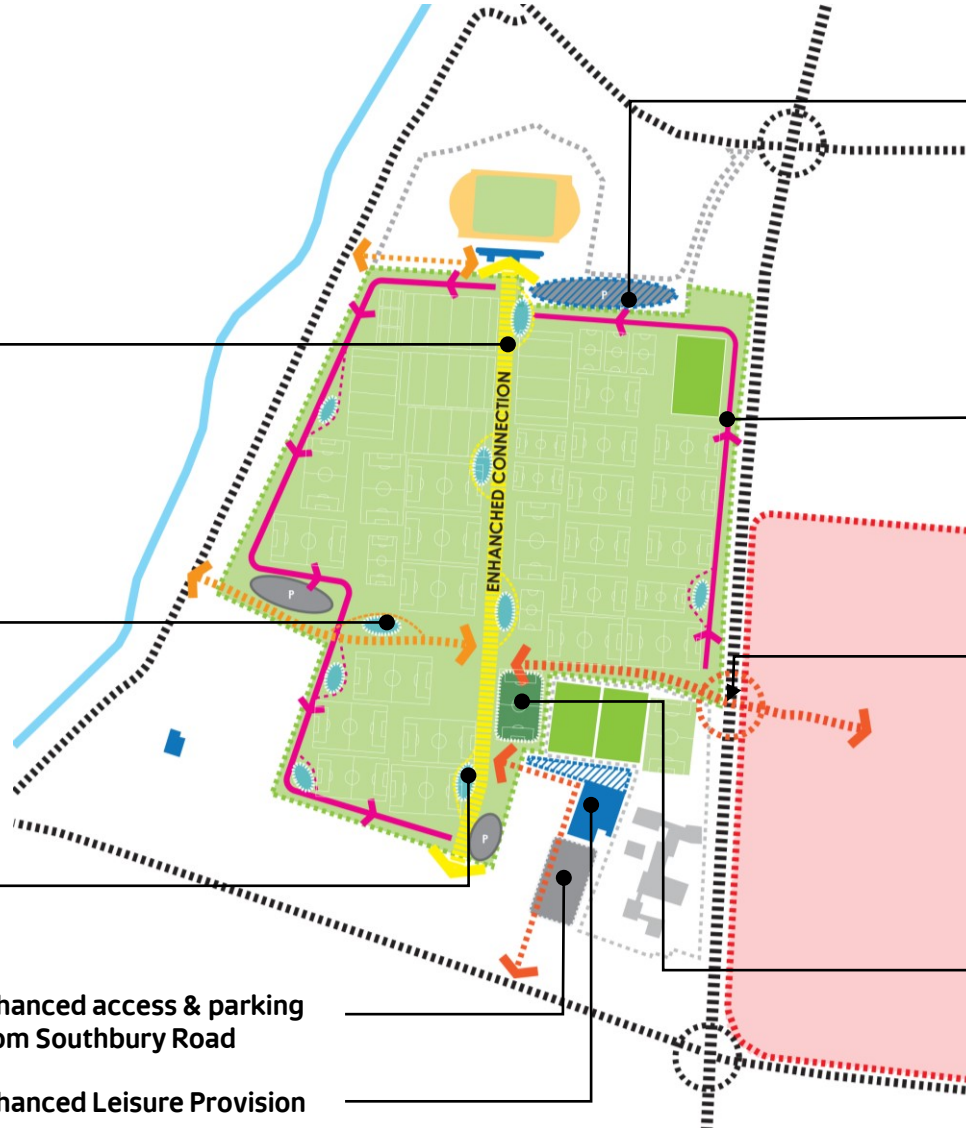
Promoting green / active routes
Blackrock planning application (DAS)



OPPORTUNITIES

ACTIVITY STRATEGY

Enhanced Circulation Routes With Activity / Sports Feature



Enhanced access & parking
From Southbury Road

Enhanced Leisure Provision

Possible Development Opportunities To
North

Promote Activity Through Site Via
Jogging/Walking Trails



Enhanced Connectivity From East , A10 &
Proposed Residential Development Zone

Enhanced Support Facilities To Pitches



OPPORTUNITIES

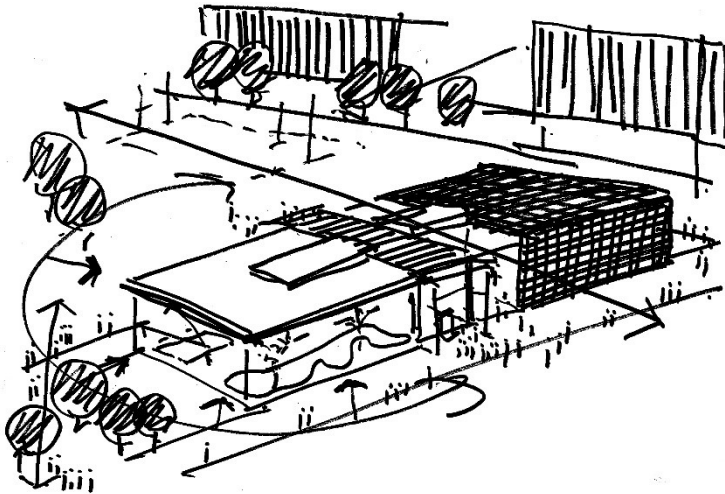
PAVILION IN THE PARK / ELEVATED SPORTS PITCHES



OPPORTUNITIES

FUNDING SPORT THROUGH DEVELOPMENT

Britannia Leisure Centre, Hackney
funded by adjacent residential development



OPPORTUNITIES

Revenue/ Management



Sports Hotel

Football Centre

Creche / Activity Centre

